

## ALDH3B1 Antibody

Catalog No: #34397

Package Size: #34397-1 50ul #34397-2 100ul

Orders: [order@signalwayantibody.com](mailto:order@signalwayantibody.com)Support: [tech@signalwayantibody.com](mailto:tech@signalwayantibody.com)

## Description

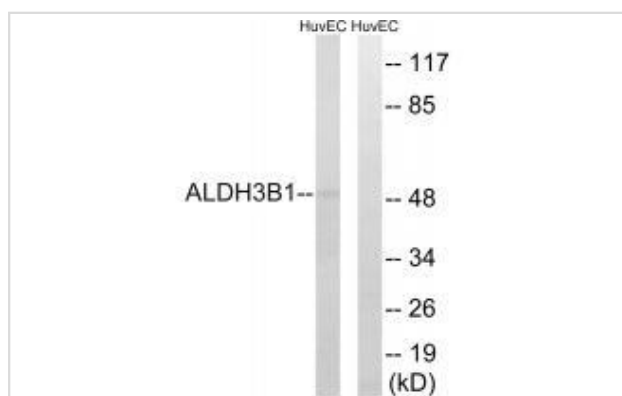
Product Name	ALDH3B1 Antibody
Host Species	Rabbit
Clonality	Polyclonal
Purification	The antibody was affinity-purified from rabbit antiserum by affinity-chromatography using epitope-specific immunogen.
Applications	WB IHC
Species Reactivity	Hu
Specificity	The antibody detects endogenous levels of total ALDH3B1 protein.
Immunogen Type	Peptide
Immunogen Description	Synthesized peptide derived from internal of human ALDH3B1.
Target Name	ALDH3B1
Other Names	Aldehyde dehydrogenase 3B1; EC 1.2.1.5; Aldehyde dehydrogenase 7;
Accession No.	Swiss-Prot: P43353NCBI Gene ID: 221
Uniprot	P43353
GeneID	221;
SDS-PAGE MW	52kd
Concentration	1.0mg/ml
Formulation	Rabbit IgG in phosphate buffered saline (without Mg <sup>2+</sup> and Ca <sup>2+</sup> ), pH 7.4, 150mM NaCl, 0.02% sodium azide and 50% glycerol.
Storage	Store at -20°C

## Application Details

Western blotting: 1:500~1:3000

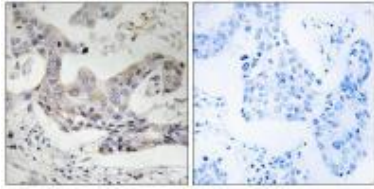
Immunohistochemistry: 1:50~1:100

## Images



Western blot analysis of extracts from HuvEc cells, using ALDH3B1 antibody #34397.

Immunohistochemistry analysis of paraffin-embedded human breast carcinoma tissue, using ALDH3B1 antibody #34397.



## Background

Oxidizes medium and long chain saturated and unsaturated aldehydes. Metabolizes also benzaldehyde. Low activity towards acetaldehyde and 3,4-dihydroxyphenylacetaldehyde. May not metabolize short chain aldehydes. May use both NADP<sup>+</sup> and NAD<sup>+</sup> as cofactors. May have a protective role against the cytotoxicity induced by lipid peroxidation.

Hsu L.C., Gene 151:285-289(1994).

Kalnine N., Submitted (AUG-2003) to the EMBL/GenBank/DDBJ databases.

Imami K., Anal. Sci. 24:161-166(2008).

Note: This product is for in vitro research use only