

SCNN1D Antibody

Catalog No: #34408



Package Size: #34408-1 50ul #34408-2 100ul

Orders: order@signalwayantibody.com
Support: tech@signalwayantibody.com

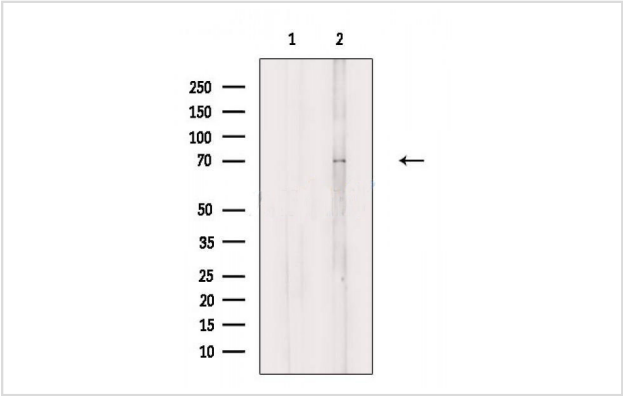
Description

Product Name	SCNN1D Antibody
Host Species	Rabbit
Clonality	Polyclonal
Purification	The antibody was affinity-purified from rabbit antiserum by affinity-chromatography using epitope-specific immunogen.
Applications	WB
Species Reactivity	Hu
Specificity	The antibody detects endogenous levels of total SCNN1D protein.
Immunogen Type	Peptide
Immunogen Description	Synthesized peptide derived from internal of human SCNN1D.
Target Name	SCNN1D
Other Names	Amiloride-sensitive sodium channel subunit delta; Epithelial Na(+) channel subunit delta; Delta-ENaC; SCNED; Nonvoltage-gated sodium channel 1 subunit delta
Accession No.	Swiss-Prot: P51172NCBI Gene ID: 6339
Uniprot	P51172
GeneID	6339;
SDS-PAGE MW	70kd
Concentration	1.0mg/ml
Formulation	Rabbit IgG in phosphate buffered saline (without Mg2+ and Ca2+), pH 7.4, 150mM NaCl, 0.02% sodium azide and 50% glycerol.
Storage	Store at -20°C

Application Details

Western blotting: 1:500~1:3000

Images



Western blot analysis of extracts from Raji cells (serum starvation treatment), using SCNN1D Antibody. The lane on the left was treated with blocking peptide.

Background

Sodium permeable non-voltage-sensitive ion channel inhibited by the diuretic amiloride. Mediates the electrodiffusion of the luminal sodium (and water, which follows osmotically) through the apical membrane of epithelial cells. Controls the reabsorption of sodium in kidney, colon, lung and sweat glands. Also plays a role in taste perception.

Waldmann R., J. Biol. Chem. 270:27411-27414(1995).

Ota T., Nat. Genet. 36:40-45(2004).

Gregory S.G., Nature 441:315-321(2006).

Note: This product is for in vitro research use only