

Glut4 Antibody

Catalog No: #21619

Package Size: #21619-1 50ul #21619-2 100ul

Orders: order@signalwayantibody.comSupport: tech@signalwayantibody.com

Description

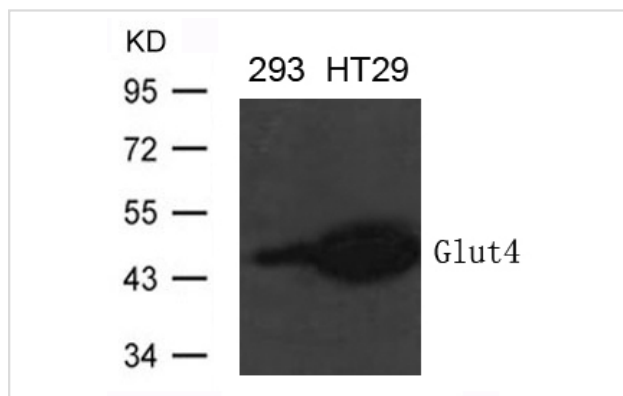
| | |
|-----------------------|---|
| Product Name | Glut4 Antibody |
| Host Species | Rabbit |
| Clonality | Polyclonal |
| Purification | Antibodies were produced by immunizing rabbits with synthetic peptide and KLH conjugates. Antibodies were purified by affinity-chromatography using epitope-specific peptide. |
| Applications | WB |
| Species Reactivity | Hu Ms Rt |
| Specificity | The antibody detects endogenous level of total Glut4 protein. |
| Immunogen Type | Peptide-KLH |
| Immunogen Description | Peptide sequence around aa.501~ 505(E-Y-L-G-P) derived from Human Glut4. |
| Target Name | Glut4 |
| Other Names | SLC2A4 |
| Accession No. | Swiss-Prot: P14672NCBI Protein: NP_001033.1 |
| Uniprot | P14672 |
| GeneID | 6517; |
| Concentration | 1.0mg/ml |
| Formulation | Supplied at 1.0mg/mL in phosphate buffered saline (without Mg ²⁺ and Ca ²⁺), pH 7.4, 150mM NaCl, 0.02% sodium azide and 50% glycerol. |
| Storage | Store at -20°C for long term preservation (recommended). Store at 4°C for short term use. |

Application Details

Predicted MW: 54kd

Western blotting: 1:500~1:1000

Images



Western blot analysis of extract from 293 and HT-29 cells using Glut4 Antibody #21619

Background

Insulin-regulated facilitative glucose transporter.

Note: This product is for in vitro research use only