

ANXA10 Antibody

Catalog No: #34426

Package Size: #34426-1 50ul #34426-2 100ul

Orders: order@signalwayantibody.com

Support: tech@signalwayantibody.com

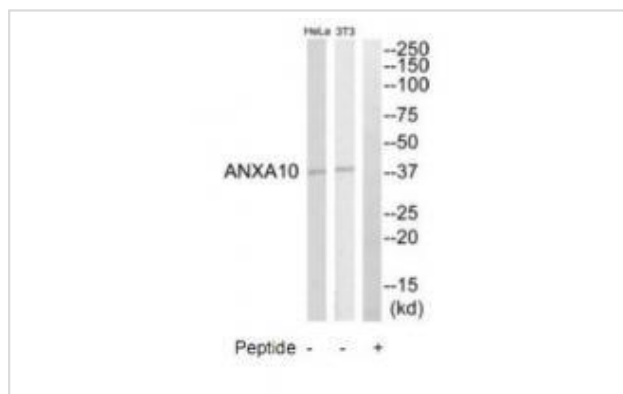
Description

Product Name	ANXA10 Antibody
Host Species	Rabbit
Clonality	Polyclonal
Purification	The antibody was affinity-purified from rabbit antiserum by affinity-chromatography using epitope-specific immunogen.
Applications	WB
Species Reactivity	Hu
Specificity	The antibody detects endogenous levels of total ANXA10 protein.
Immunogen Type	Peptide
Immunogen Description	Synthesized peptide derived from C-terminal of human ANXA10.
Target Name	ANXA10
Other Names	annexin 14; annexin A10; annexin-14; ANX10; ANX14
Accession No.	Swiss-Prot: Q9UJ72NCBI Gene ID: 11199
Uniprot	Q9UJ72
GeneID	11199;
SDS-PAGE MW	38kd
Concentration	1.0mg/ml
Formulation	Rabbit IgG in phosphate buffered saline (without Mg ²⁺ and Ca ²⁺), pH 7.4, 150mM NaCl, 0.02% sodium azide and 50% glycerol.
Storage	Store at -20°C

Application Details

Western blotting: 1:500~1:3000

Images



Western blot analysis of extracts from HeLa cell and NIH-3T3 cells, using ANXA10 antibody #34426.

Background

This gene encodes a member of the annexin family. Members of this calcium-dependent phospholipid-binding protein family play a role in the regulation of cellular growth and in signal transduction pathways. The function of this gene has not yet been determined.

Morgan R.O., Genomics 60:40-49(1999).

Paul H., Submitted (OCT-1999) to the EMBL/GenBank/DDBJ databases.

The MGC Project Team, Genome Res. 14:2121-2127(2004).

Note: This product is for in vitro research use only