

Id2 Antibody

Catalog No: #21620

Package Size: #21620-1 50ul #21620-2 100ul

Orders: order@signalwayantibody.comSupport: tech@signalwayantibody.com

Description

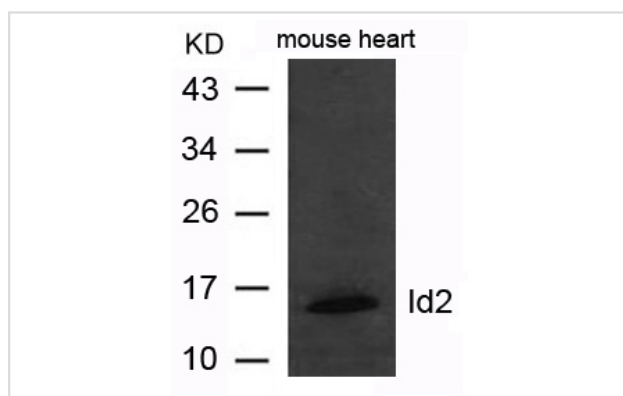
Product Name	Id2 Antibody
Host Species	Rabbit
Clonality	Polyclonal
Purification	Antibodies were produced by immunizing rabbits with synthetic peptide and KLH conjugates. Antibodies were purified by affinity-chromatography using epitope-specific peptide.
Applications	WB
Species Reactivity	Hu Ms Rt
Specificity	The antibody detects endogenous level of total Id2 protein.
Immunogen Type	Peptide-KLH
Immunogen Description	Peptide sequence around aa.5~9(S-P-V-R-S) derived from Human Id2.
Target Name	Id2
Other Names	GIG8; ID2A; ID2H
Accession No.	Swiss-Prot: Q02363NCBI Protein: NP_002157.2
Uniprot	Q02363
GeneID	3398;
Concentration	1.0mg/ml
Formulation	Supplied at 1.0mg/mL in phosphate buffered saline (without Mg ²⁺ and Ca ²⁺), pH 7.4, 150mM NaCl, 0.02% sodium azide and 50% glycerol.
Storage	Store at -20°C for long term preservation (recommended). Store at 4°C for short term use.

Application Details

Predicted MW: 15kd

Western blotting: 1:500~1:1000

Images



Western blot analysis of extract from mouse heart tissue using Id2 Antibody #21620

Background

ID (inhibitor of DNA binding) HLH proteins lack a basic DNA-binding domain but are able to form heterodimers with other HLH proteins, thereby inhibiting DNA binding. ID-2 may be an inhibitor of tissue-specific gene expression.

The MGC Project TeamGenome Res. 14:2121-2127(2004)

Note: This product is for in vitro research use only