

ARSD Antibody

Catalog No: #34441

Package Size: #34441-1 50ul #34441-2 100ul

Orders: order@signalwayantibody.comSupport: tech@signalwayantibody.com

Description

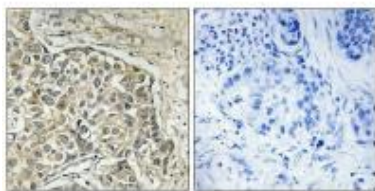
| | |
|-----------------------|--|
| Product Name | ARSD Antibody |
| Host Species | Rabbit |
| Clonality | Polyclonal |
| Purification | The antibody was affinity-purified from rabbit antiserum by affinity-chromatography using epitope-specific immunogen. |
| Applications | IHC IF |
| Species Reactivity | Hu |
| Specificity | The antibody detects endogenous levels of total ARSD protein |
| Immunogen Type | Peptide |
| Immunogen Description | Synthesized peptide derived from internal of human ARSD. |
| Target Name | ARSD |
| Other Names | Arylsulfatase D; EC 3.1.6.-; ASD; |
| Accession No. | Swiss-Prot: P51689NCBI Gene ID: 414 |
| Uniprot | P51689 |
| GeneID | 414; |
| SDS-PAGE MW | 65kd |
| Concentration | 1.0mg/ml |
| Formulation | Rabbit IgG in phosphate buffered saline (without Mg ²⁺ and Ca ²⁺), pH 7.4, 150mM NaCl, 0.02% sodium azide and 50% glycerol. |
| Storage | Store at -20°C |

Application Details

Immunohistochemistry: 1:50~1:100

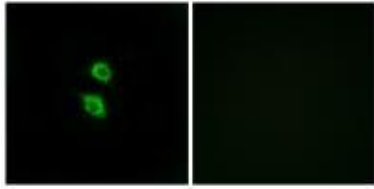
Immunofluorescence: 1:100~1:500

Images



Immunohistochemistry analysis of paraffin-embedded human lung carcinoma tissue using ARSD antibody #34441.

Immunofluorescence analysis of MCF-7 cells, using ARSD antibody #34441.



Background

The protein encoded by this gene is a member of the sulfatase family. Sulfatases are essential for the correct composition of bone and cartilage matrix. The encoded protein is postrationally glycosylated and localized to the lysosome. This gene is located within a cluster of similar arylsulfatase genes on chromosome X. A related pseudogene has been identified in the pseudoautosomal region of chromosome Y.

Franco B., Cell 81:15-25(1995).

Urbitsch P., DNA Cell Biol. 19:765-773(2000).

Note: This product is for in vitro research use only