

## ARSF Antibody

Catalog No: #34443

Package Size: #34443-1 50ul #34443-2 100ul

Orders: [order@signalwayantibody.com](mailto:order@signalwayantibody.com)Support: [tech@signalwayantibody.com](mailto:tech@signalwayantibody.com)

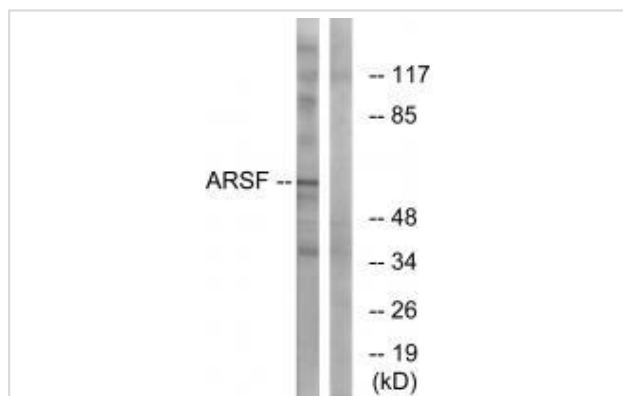
## Description

Product Name	ARSF Antibody
Host Species	Rabbit
Clonality	Polyclonal
Purification	The antibody was affinity-purified from rabbit antiserum by affinity-chromatography using epitope-specific immunogen.
Applications	WB
Species Reactivity	Hu
Specificity	The antibody detects endogenous levels of total ARSF protein.
Immunogen Type	Peptide
Immunogen Description	Synthesized peptide derived from internal of human ARSF.
Target Name	ARSF
Other Names	arylsulfatase F; ASF; EC 3.1.6.-;
Accession No.	Swiss-Prot: P54793NCBI Gene ID: 416
Uniprot	P54793
GeneID	416;
SDS-PAGE MW	60kd
Concentration	1.0mg/ml
Formulation	Rabbit IgG in phosphate buffered saline (without Mg <sup>2+</sup> and Ca <sup>2+</sup> ), pH 7.4, 150mM NaCl, 0.02% sodium azide and 50% glycerol.
Storage	Store at -20°C

## Application Details

Western blotting: 1:500~1:3000

## Images



Western blot analysis of extracts from COS-7 cells, using ARSF antibody #34443.

## Background

---

This gene is a member of the sulfatase family, and more specifically, the arylsulfatase subfamily. Members of the subfamily share similarity in sequence and splice sites, and are clustered together on chromosome X, suggesting that they are derived from recent gene duplication events. Sulfatases are essential for the correct composition of bone and cartilage matrix. The activity of this protein, unlike that of arylsulfatase E, is not inhibited by warfarin. Multiple alternatively spliced variants, encoding the same protein, have been identified.

Puca A.A., Genomics 42:192-199(1997).

The MGC Project Team; Genome Res. 14:2121-2127(2004).

Franco B., Cell 81:15-25(1995).

---

Note: This product is for in vitro research use only