

## Elk1(Phospho-Ser389) Antibody

Catalog No: #11037



Package Size: #11037-1 50ul #11037-2 100ul

Orders: [order@signalwayantibody.com](mailto:order@signalwayantibody.com)Support: [tech@signalwayantibody.com](mailto:tech@signalwayantibody.com)

## Description

Product Name	Elk1(Phospho-Ser389) Antibody
Host Species	Rabbit
Clonality	Polyclonal
Purification	Antibodies were produced by immunizing rabbits with synthetic phosphopeptide and KLH conjugates. Antibodies were purified by affinity-chromatography using epitope-specific phosphopeptide. Non-phospho specific antibodies were removed by chromatography using non-phosphopeptide.
Applications	WB IHC
Species Reactivity	Hu Ms Rt
Specificity	The antibody detects endogenous level of Elk1 only when phosphorylated at serine 389.
Immunogen Type	Peptide-KLH
Immunogen Description	Peptide sequence around phosphorylation site of serine 389 (P-R-S(p)-P-A) derived from Human Elk-1.
Target Name	Elk1
Modification	Phospho
Other Names	ELK1; ETS-domain protein Elk-1;
Accession No.	Swiss-Prot: P19419NCBI Protein: NP_001107595.1
Uniprot	P19419
GeneID	2002;
Concentration	1.0mg/ml
Formulation	Supplied at 1.0mg/mL in phosphate buffered saline (without Mg <sup>2+</sup> and Ca <sup>2+</sup> ), pH 7.4, 150mM NaCl, 0.02% sodium azide and 50% glycerol.
Storage	Store at -20°C for long term preservation (recommended). Store at 4°C for short term use.

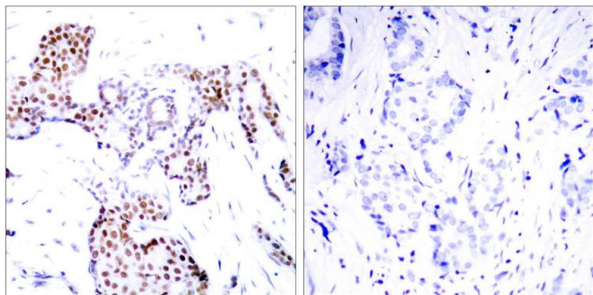
## Application Details

Predicted MW: 45kd

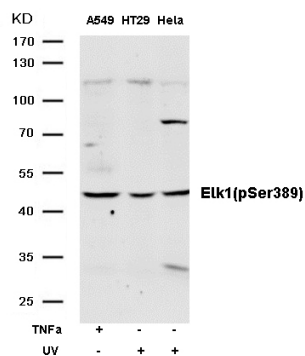
Western blotting: 1:500~1:1000

Immunohistochemistry: 1:50~1:100

## Images



Immunohistochemical analysis of paraffin-embedded human breast carcinoma tissue using Elk1(Phospho-Ser389) Antibody #11037(left) or the same antibody preincubated with blocking peptide(right).



Western blot analysis of extracts from A549 cells untreated or treated with TNFα; HT29 and HeLa cells untreated or treated withUV using Elk1(Phospho-Ser389) Antibody #11037

## Background

Elk-1 is a member of the Ets family of transcription factors and of the ternary complex factor (TCF) subfamily. Proteins of the TCF subfamily form a ternary complex by binding to the serum response factor and the serum response element in the promoter of the c-fos proto-oncogene. The protein encoded by this gene is a nuclear target for the ras-raf-MAPK signaling cascade. Alternatively spliced transcript variants encoding the same protein have been found for this gene

Janknecht R, et al. (1993) EMBO J. 12(13): 5097-5104.

Marais R, et al. (1993) Cell 73:381-393.

Kortenjann M, et al. (1994) Mol Cell Biol. 14:4815-4824.

Hill C S, et al. (1995) Cell. 80:199-211.

Cavigelli M, et al. (1995) EMBO J. 14:5957-5964.

Note: This product is for in vitro research use only