

ATPG Antibody

Catalog No: #34449

Package Size: #34449-1 50ul #34449-2 100ul

Orders: order@signalwayantibody.comSupport: tech@signalwayantibody.com

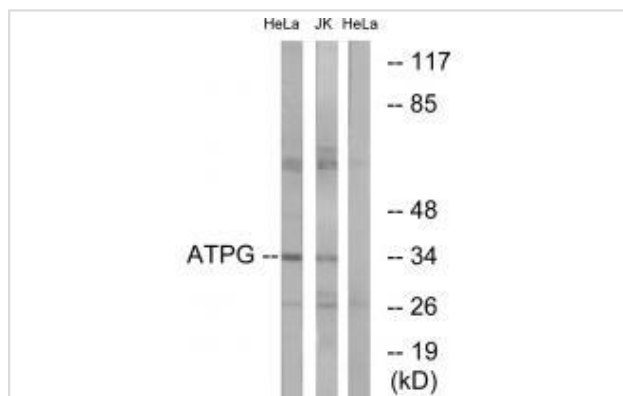
Description

Product Name	ATPG Antibody
Host Species	Rabbit
Clonality	Polyclonal
Purification	The antibody was affinity-purified from rabbit antiserum by affinity-chromatography using epitope-specific immunogen.
Applications	WB
Species Reactivity	Hu Ms Rt
Specificity	The antibody detects endogenous levels of total ATPG protein.
Immunogen Type	Peptide
Immunogen Description	Synthesized peptide derived from internal of human ATPG.
Target Name	ATPG
Other Names	ATP synthase gamma chain; mitochondrial precursor; ATP5C1; ATPG; EC 3.6.3.14
Accession No.	Swiss-Prot: P36542NCBI Gene ID: 509
Uniprot	P36542
GeneID	509;
SDS-PAGE MW	33kd
Concentration	1.0mg/ml
Formulation	Rabbit IgG in phosphate buffered saline (without Mg ²⁺ and Ca ²⁺), pH 7.4, 150mM NaCl, 0.02% sodium azide and 50% glycerol.
Storage	Store at -20°C

Application Details

Western blotting: 1:500~1:3000

Images



Western blot analysis of extracts from HeLa cells and Jurkat cells, using ATPG antibody #34449.

Background

Mitochondrial membrane ATP synthase (F1F0 ATP synthase or Complex V) produces ATP from ADP in the presence of a proton gradient across the membrane which is generated by electron transport complexes of the respiratory chain. F-type ATPases consist of two structural domains, F1 - containing the extramembraneous catalytic core, and F0 - containing the membrane proton channel, linked together by a central stalk and a peripheral stalk. During catalysis, ATP synthesis in the catalytic domain of F1 is coupled via a rotary mechanism of the central stalk subunits to proton translocation. Part of the complex F1 domain and the central stalk which is part of the complex rotary element. The gamma subunit protrudes into the catalytic domain formed of alpha3beta3. Rotation of the central stalk against the surrounding alpha3beta3 subunits leads to hydrolysis of ATP in three separate catalytic sites on the beta subunits.

Matsuda C., J. Biol. Chem. 268:24950-24958(1993).

Deloukas P., Nature 429:375-381(2004).

The MGC Project Team; Genome Res. 14:2121-2127(2004).

Note: This product is for in vitro research use only