

CDCP1(CD318) Antibody

Catalog No: #21479

Package Size: #21479-1 50ul #21479-2 100ul

Orders: order@signalwayantibody.comSupport: tech@signalwayantibody.com

Description

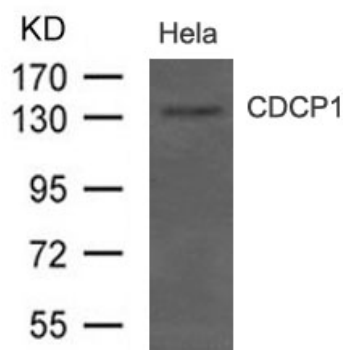
Product Name	CDCP1(CD318) Antibody
Host Species	Rabbit
Clonality	Polyclonal
Purification	Antibodies were produced by immunizing rabbits with synthetic peptide and KLH conjugates. Antibodies were purified by affinity-chromatography using epitope-specific peptide.
Applications	WB
Species Reactivity	Hu
Specificity	The antibody detects endogenous level of total CDCP1(CD318) protein.
Immunogen Type	Peptide-KLH
Immunogen Description	Peptide sequence around aa.828~832(T-Q-E-P-M) derived from Human CDCP1(CD318).
Target Name	CDCP1(CD318)
Other Names	TRASK; SIMA135;
Accession No.	Swiss-Prot: Q9H5V8NCBI Protein: NP_073753.3
Uniprot	Q9H5V8
GeneID	64866;
Concentration	1.0mg/ml
Formulation	Supplied at 1.0mg/mL in phosphate buffered saline (without Mg ²⁺ and Ca ²⁺), pH 7.4, 150mM NaCl, 0.02% sodium azide and 50% glycerol.
Storage	Store at -20°C for long term preservation (recommended). Store at 4°C for short term use.

Application Details

Predicted MW: 140kd

Western blotting: 1:500

Images



Western blot analysis of extract from HeLa cells using
CDCP1(CD318) Antibody #21479

Background

May be involved in cell adhesion and cell matrix association. May play a role in the regulation of anchorage versus migration or proliferation versus differentiation via its phosphorylation. May be a novel marker for leukemia diagnosis and for immature hematopoietic stem cell subsets. Belongs to the tetraspanin web involved in tumor progression and metastasis.

Scherl-Mostageer M., Sommergruber W., Abseher R., Hauptmann R., Ambros P., Schweifer N.

Oncogene 20:4402-4408(2001)

Bhatt A.S., Erdjument-Bromage H., Tempst P., Craik C.S., Moasser M.M.Oncogene 24:5333-5343(2005)

Xia Y., Gil S.G., Carter W.G.J. Cell Biol. 132:727-740(1996)

Note: This product is for in vitro research use only