

ATN1 Antibody

Catalog No: #34473

Package Size: #34473-1 50ul #34473-2 100ul

Orders: order@signalwayantibody.com

Support: tech@signalwayantibody.com

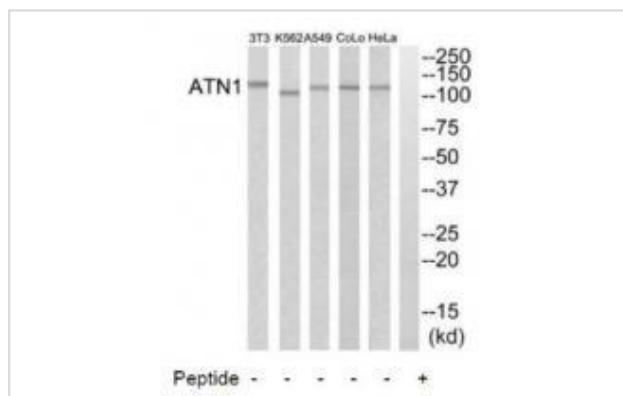
Description

Product Name	ATN1 Antibody
Host Species	Rabbit
Clonality	Polyclonal
Purification	The antibody was affinity-purified from rabbit antiserum by affinity-chromatography using epitope-specific immunogen.
Applications	WB
Species Reactivity	Hu Ms
Specificity	The antibody detects endogenous levels of total ATN1 protein.
Immunogen Type	Peptide
Immunogen Description	Synthesized peptide derived from N-terminal of human ATN1.
Target Name	ATN1
Other Names	ATN1; Atrophin-1; Dentatorubral-pallidoluysian atrophy protein; DRPL;
Accession No.	Swiss-Prot: P54259NCBI Gene ID: 1822
Uniprot	P54259
GeneID	1822;
SDS-PAGE MW	130kd
Concentration	1.0mg/ml
Formulation	Rabbit IgG in phosphate buffered saline (without Mg ²⁺ and Ca ²⁺), pH 7.4, 150mM NaCl, 0.02% sodium azide and 50% glycerol.
Storage	Store at -20°C

Application Details

Western blotting: 1:500~1:3000

Images



Western blot analysis of extracts from HeLa cells, A549 cells, K562 cells, COLO205 cells and NIH-3T3 cells, using ATN1 antibody #34473.

Background

Transcriptional corepressor. Recruits NR2E1 to repress transcription. Promotes vascular smooth cell (VSMC) migration and orientation By similarity. Corepressor of MTG8 transcriptional repression. Has some intrinsic repression activity which is independent of the number of poly-Asn (polyQ) repeats.

Nagafuchi S., Nat. Genet. 8:177-182(1994).

Onodera O., Am. J. Hum. Genet. 57:1050-1060(1995).

Margolis R.L., Brain Res. Mol. Brain Res. 36:219-226(1996).

Note: This product is for in vitro research use only