

BMP10 Antibody

Catalog No: #34499



Package Size: #34499-1 50ul #34499-2 100ul

Orders: order@signalwayantibody.com
Support: tech@signalwayantibody.com

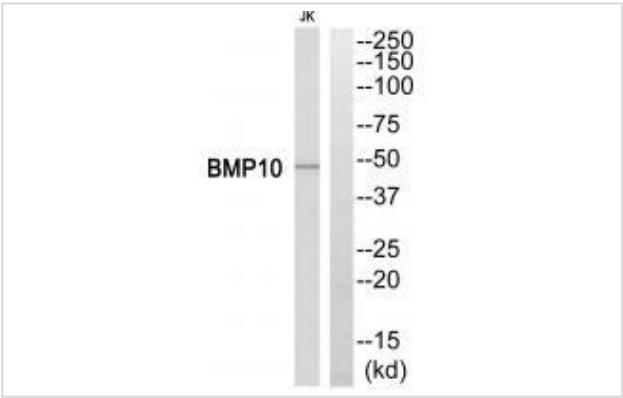
Description

Product Name	BMP10 Antibody
Host Species	Rabbit
Clonality	Polyclonal
Purification	The antibody was affinity-purified from rabbit antiserum by affinity-chromatography using epitope-specific immunogen.
Applications	WB
Species Reactivity	Hu
Specificity	The antibody detects endogenous levels of total BMP10 protein.
Immunogen Type	Peptide
Immunogen Description	Synthesized peptide derived from Internal of human BMP10.
Target Name	BMP10
Other Names	BMP-10; BMP10; Bone morphogenetic protein 10; MGC126783;
Accession No.	Swiss-Prot: O95393NCBI Gene ID: 27302
Uniprot	O95393
GeneID	27302;
SDS-PAGE MW	48kd
Concentration	1.0mg/ml
Formulation	Rabbit IgG in phosphate buffered saline (without Mg2+ and Ca2+), pH 7.4, 150mM NaCl, 0.02% sodium azide and 50% glycerol.
Storage	Store at -20°C

Application Details

Western blotting: 1:500~1:3000

Images



Western blot analysis of extracts from Jurkat cells, using BMP10 antibody #34499.

Background

Required for maintaining the proliferative activity of embryonic cardiomyocytes by preventing premature activation of the negative cell cycle regulator CDKN1C/p57KIP and maintaining the required expression levels of cardiogenic factors such as MEF2C and NKX2-5. Acts as a ligand for ACVRL1/ALK1, BMPR1A/ALK3 and BMPR1B/ALK6, leading to activation of SMAD1, SMAD5 and SMAD8 transcription factors. Inhibits endothelial cell migration and growth. May reduce cell migration and cell matrix adhesion in breast cancer cell lines.

Celeste A.J., Submitted (OCT-1998) to the EMBL/GenBank/DDBJ databases.

Hillier L.W., Nature 434:724-731(2005).

Mazerbourg S., J. Biol. Chem. 280:32122-32132(2005).

Note: This product is for in vitro research use only