

BCAS2 Antibody

Catalog No: #34508



Package Size: #34508-1 50ul #34508-2 100ul

Orders: order@signalwayantibody.com
Support: tech@signalwayantibody.com

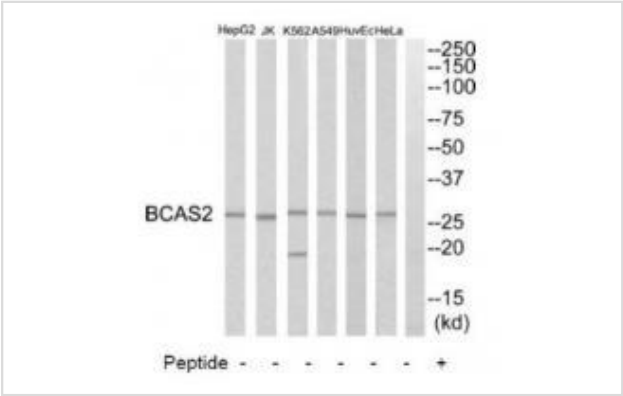
Description

Product Name	BCAS2 Antibody
Host Species	Rabbit
Clonality	Polyclonal
Purification	The antibody was affinity-purified from rabbit antiserum by affinity-chromatography using epitope-specific immunogen.
Applications	WB
Species Reactivity	Hu
Specificity	The antibody detects endogenous levels of total BCAS2 protein.
Immunogen Type	Peptide
Immunogen Description	Synthesized peptide derived from C-terminal of human BCAS2.
Target Name	BCAS2
Other Names	Pre-mRNA-splicing factor SPF27; Spliceosome-associated protein SPF 27; Breast carcinoma-amplified sequence 2; DNA amplified in mammary carcinoma 1 protein; BCAS2
Accession No.	Swiss-Prot: O75934NCBI Gene ID: 10286
Uniprot	O75934
GeneID	10286;
SDS-PAGE MW	27kd
Concentration	1.0mg/ml
Formulation	Rabbit IgG in phosphate buffered saline (without Mg2+ and Ca2+), pH 7.4, 150mM NaCl, 0.02% sodium azide and 50% glycerol.
Storage	Store at -20°C

Application Details

Western blotting: 1:500~1:3000

Images



Western blot analysis of extracts from HeLa cells, HepG2 cells, Huvec cells, A549 cells, K562 cells and Jurkat cells, using BCAS2 antibody #34508.

Background

Component of the PRP19-CDC5L complex that forms an integral part of the spliceosome and is required for activating pre-mRNA splicing. May have a scaffolding role in the spliceosome assembly as it contacts all other components of the core complex.

Neubauer G., Nat. Genet. 20:46-50(1998).

Nagasaki K., Cancer Lett. 140:219-226(1999).

Ebert L., Submitted (JUN-2004) to the EMBL/GenBank/DDBJ databases.

Note: This product is for in vitro research use only