

CHP2 Antibody

Catalog No: #34512

Package Size: #34512-1 50ul #34512-2 100ul

Orders: order@signalwayantibody.comSupport: tech@signalwayantibody.com

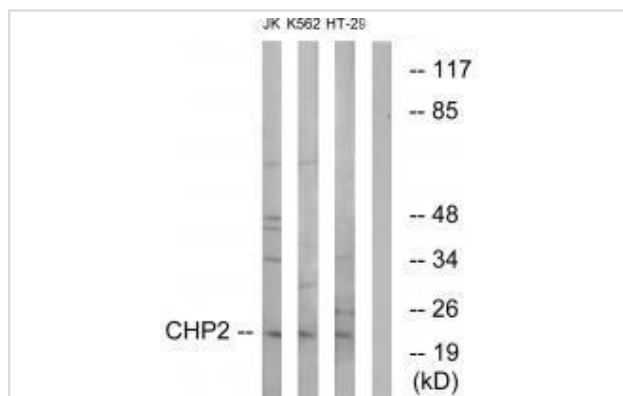
Description

Product Name	CHP2 Antibody
Host Species	Rabbit
Clonality	Polyclonal
Purification	The antibody was affinity-purified from rabbit antiserum by affinity-chromatography using epitope-specific immunogen.
Applications	WB
Species Reactivity	Hu Ms Rt
Specificity	The antibody detects endogenous levels of total CHP2 protein.
Immunogen Type	Peptide
Immunogen Description	Synthesized peptide derived from internal of humanCHP2.
Target Name	CHP2
Other Names	Calcineurin B homologous protein 2; Hepatocellular carcinoma-associated antigen 520; CHP2; HCA520;
Accession No.	Swiss-Prot: O43745NCBI Gene ID: 63928
Uniprot	O43745
GeneID	63928;
SDS-PAGE MW	22kd
Concentration	1.0mg/ml
Formulation	Rabbit IgG in phosphate buffered saline (without Mg ²⁺ and Ca ²⁺), pH 7.4, 150mM NaCl, 0.02% sodium azide and 50% glycerol.
Storage	Store at -20°C

Application Details

Western blotting: 1:500~1:3000

Images



Western blot analysis of extracts from Jurkat cells, K562 cells and HT-29 cells, using CHP2 antibody. The lane on the right is treated with synthesized peptide

Background

Functions as an integral cofactor in cell pH regulation by controlling plasma membrane-type Na⁺/H⁺ exchange activity. Binds to and activates SLC9A1/NHE1 in a serum-independent manner, thus increasing pH and protecting cells from serum deprivation-induced death. Also plays a role in the regulation of cell proliferation and tumor growth by increasing the phosphatase activity of PPP3CA in a calcium-dependent manner. Activator of the calcineurin/NFAT signaling pathway. Involved in the cytoplasmic translocation of the transcription factor NFATC3 to the nucleus.

Loftus B.J., Genomics 60:295-308(1999).

Wang Y., J. Immunol. 169:1102-1109(2002).

Pang T., J. Biol. Chem. 277:43771-43777(2002).

Note: This product is for in vitro research use only