

CAPN12 Antibody

Catalog No: #34520

Package Size: #34520-1 50ul #34520-2 100ul

Orders: order@signalwayantibody.comSupport: tech@signalwayantibody.com

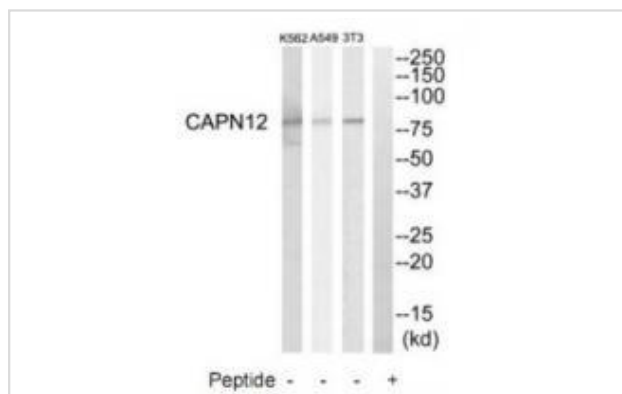
Description

Product Name	CAPN12 Antibody
Host Species	Rabbit
Clonality	Polyclonal
Purification	The antibody was affinity-purified from rabbit antiserum by affinity-chromatography using epitope-specific immunogen.
Applications	WB
Species Reactivity	Hu Ms
Specificity	The antibody detects endogenous levels of total CAPN12 protein.
Immunogen Type	Peptide
Immunogen Description	Synthesized peptide derived from internal of human CAPN12.
Target Name	CAPN12
Other Names	Calpain-12; Calcium-activated neutral proteinase 12; CANP 12;
Accession No.	Swiss-Prot: Q6ZSI9NCBI Gene ID: 147968
Uniprot	Q6ZSI9
GeneID	147968;
SDS-PAGE MW	80kd
Concentration	1.0mg/ml
Formulation	Rabbit IgG in phosphate buffered saline (without Mg ²⁺ and Ca ²⁺), pH 7.4, 150mM NaCl, 0.02% sodium azide and 50% glycerol.
Storage	Store at -20°C

Application Details

Western blotting: 1:500~1:3000

Images



Western blot analysis of extracts from NIH-3T3 cells, A549 cells and K562 cells, using CAPN12 antibody #34520.

Background

Calcium-regulated non-lysosomal thiol-protease By similarity.

Ota T., Nat. Genet. 36:40-45(2004).

Note: This product is for in vitro research use only