

ABCC3 Antibody

Catalog No: #34527

Package Size: #34527-1 50ul #34527-2 100ul

Orders: order@signalwayantibody.com

Support: tech@signalwayantibody.com

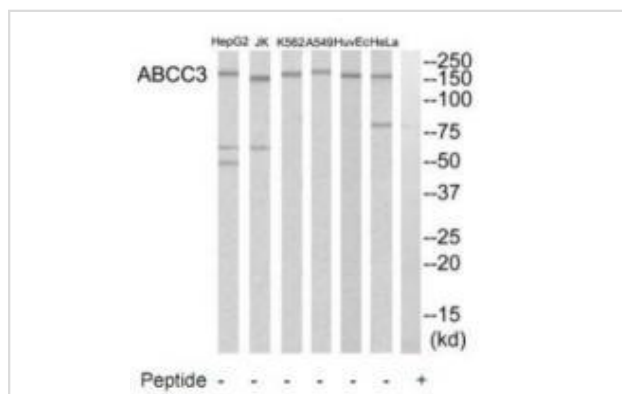
Description

Product Name	ABCC3 Antibody
Host Species	Rabbit
Clonality	Polyclonal
Purification	The antibody was affinity-purified from rabbit antiserum by affinity-chromatography using epitope-specific immunogen.
Applications	WB
Species Reactivity	Hu
Specificity	The antibody detects endogenous levels of total ABCC3 protein.
Immunogen Type	Peptide
Immunogen Description	Synthesized peptide derived from internal of human ABCC3.
Target Name	ABCC3
Other Names	Canalicular multispecific organic anion transporter 2; ATP-binding cassette sub-family C member 3; Multi-specific organic anion transporter D; MOAT-D; Multidrug resistance-associated protein 3
Accession No.	Swiss-Prot: O15438NCBI Gene ID: 8714
Uniprot	O15438
GeneID	8714;
SDS-PAGE MW	170kd
Concentration	1.0mg/ml
Formulation	Rabbit IgG in phosphate buffered saline (without Mg ²⁺ and Ca ²⁺), pH 7.4, 150mM NaCl, 0.02% sodium azide and 50% glycerol.
Storage	Store at -20°C

Application Details

Western blotting: 1:500~1:3000

Images



Western blot analysis of extracts from HeLa cells, A549 cells, Jurkat cells, HuvEc cells, K562 cells and HepG2 cells, using ABCC3 antibody #34527.

Background

May act as an inducible transporter in the biliary and intestinal excretion of organic anions. Acts as an alternative route for the export of bile acids and glucuronides from cholestatic hepatocytes By similarity.

Uchiyama T., *em. Biophys. Res. Commun.* 252:103-110(1998).

Kiuchi Y., *FEBS Lett.* 433:149-152(1998).

Ilinsky M.G., *J. Natl. Cancer Inst.* 90:1735-1741(1998).

Note: This product is for in vitro research use only