

CLIP4 Antibody

Catalog No: #34531



Package Size: #34531-1 50ul #34531-2 100ul

Orders: order@signalwayantibody.com
Support: tech@signalwayantibody.com

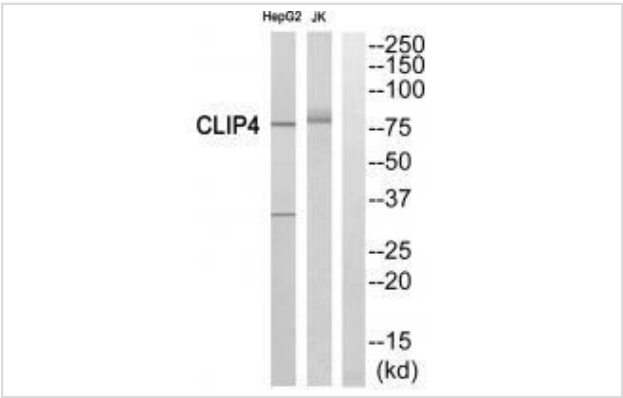
Description

| | |
|-----------------------|---|
| Product Name | CLIP4 Antibody |
| Host Species | Rabbit |
| Clonality | Polyclonal |
| Purification | The antibody was affinity-purified from rabbit antiserum by affinity-chromatography using epitope-specific immunogen. |
| Applications | WB |
| Species Reactivity | Hu |
| Specificity | The antibody detects endogenous levels of total CLIP4 protein. |
| Immunogen Type | Peptide |
| Immunogen Description | Synthesized peptide derived from internal of human CLIP4. |
| Target Name | CLIP4 |
| Other Names | Canalicular multispecific organic anion transporter 1; ATP-binding cassette sub-family C member 2; Canalicular multidrug resistance protein; Multidrug resistance-associated protein 2; ABCC2 |
| Accession No. | Swiss-Prot: Q8N3C7NCBI Gene ID: 79745 |
| Uniprot | Q8N3C7 |
| GeneID | 79745; |
| SDS-PAGE MW | 76kd |
| Concentration | 1.0mg/ml |
| Formulation | Rabbit IgG in phosphate buffered saline (without Mg2+ and Ca2+), pH 7.4, 150mM NaCl, 0.02% sodium azide and 50% glycerol. |
| Storage | Store at -20°C |

Application Details

Western blotting: 1:500~1:3000

Images



Western blot analysis of extracts from HepG2 cells and Jurkat cells, using CLIP4antibody #34531.

Background

4 isoforms of the human protein are produced by alternative splicing.

Guo J.H., Submitted (OCT-2001) to the EMBL/GenBank/DDBJ databases.

Ota T., Nat. Genet. 36:40-45(2004).

Bechtel S., BMC Genomics 8:399-399(2007).

Note: This product is for in vitro research use only