

CEACAM21 Antibody

Catalog No: #34553

Package Size: #34553-1 50ul #34553-2 100ul

Orders: order@signalwayantibody.comSupport: tech@signalwayantibody.com

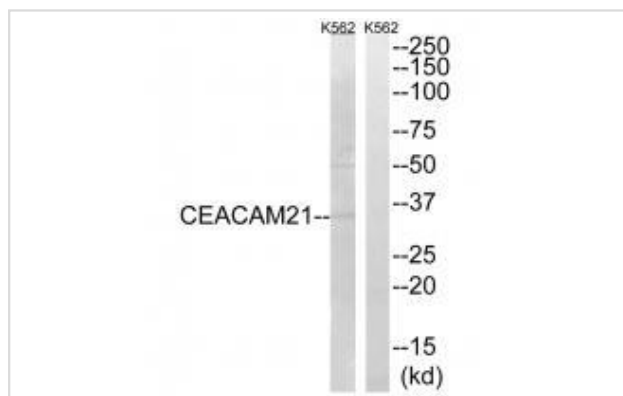
Description

Product Name	CEACAM21 Antibody
Host Species	Rabbit
Clonality	Polyclonal
Purification	The antibody was affinity-purified from rabbit antiserum by affinity-chromatography using epitope-specific immunogen.
Applications	WB
Species Reactivity	Hu
Specificity	The antibody detects endogenous levels of total CEACAM21 protein.
Immunogen Type	Peptide
Immunogen Description	Synthesized peptide derived from internal of human CEACAM21.
Target Name	CEACAM21
Other Names	Carcinoembryonic antigen-related cell adhesion molecule 21;
Accession No.	Swiss-Prot: Q3KPI0NCBI Gene ID: 90273
Uniprot	Q3KPI0
GeneID	90273;
SDS-PAGE MW	32kd
Concentration	1.0mg/ml
Formulation	Rabbit IgG in phosphate buffered saline (without Mg ²⁺ and Ca ²⁺), pH 7.4, 150mM NaCl, 0.02% sodium azide and 50% glycerol.
Storage	Store at -20°C

Application Details

Western blotting: 1:500~1:3000

Images



Western blot analysis of extracts from K562 cells, using CEACAM21 antibody #34553.

Background

Belongs to the immunoglobulin superfamily. CEA family. 3 isoforms of the human protein are produced by alternative splicing. Note: This description may include information from UniProtKB.

Gray A.M., Genome Res. 13:2265-2270(2003).

Lucas S.M., Nature 428:529-535(2004).

The MGC Project Team, Genome Res. 14:2121-2127(2004).

Note: This product is for in vitro research use only