

## CEP135 Antibody

Catalog No: #34564

Package Size: #34564-1 50ul #34564-2 100ul

Orders: [order@signalwayantibody.com](mailto:order@signalwayantibody.com)Support: [tech@signalwayantibody.com](mailto:tech@signalwayantibody.com)

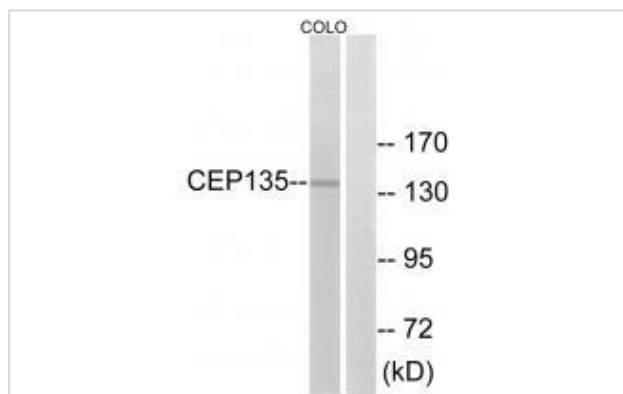
## Description

Product Name	CEP135 Antibody
Host Species	Rabbit
Clonality	Polyclonal
Purification	The antibody was affinity-purified from rabbit antiserum by affinity-chromatography using epitope-specific immunogen.
Applications	WB
Species Reactivity	Hu
Specificity	The antibody detects endogenous levels of total CEP135 protein.
Immunogen Type	Peptide
Immunogen Description	Synthesized peptide derived from C-terminal of human CEP135.
Target Name	CEP135
Other Names	centrosomal protein 4; Cep135; CP135; KIAA0635;
Accession No.	Swiss-Prot: Q66GS9NCBI Gene ID: 9662
Uniprot	Q66GS9
GeneID	9662;
SDS-PAGE MW	134kd
Concentration	1.0mg/ml
Formulation	Rabbit IgG in phosphate buffered saline (without Mg <sup>2+</sup> and Ca <sup>2+</sup> ), pH 7.4, 150mM NaCl, 0.02% sodium azide and 50% glycerol.
Storage	Store at -20°C

## Application Details

Western blotting: 1:500~1:3000

## Images



Western blot analysis of extracts from COLO cells, using CEP135 antibody #34564.

## Background

---

Centrosomal protein involved in centriole biogenesis. Acts as a scaffolding protein during early centriole biogenesis. Also required for centriole-centriole cohesion during interphase by acting as a platform protein for CEP250 at the centriole.

Ishikawa K., DNA Res. 5:169-176(1998).

Ota T., Nat. Genet. 36:40-45(2004).

Andersen J.S., Nature 426:570-574(2003).

---

Note: This product is for in vitro research use only