

## CEP70 Antibody

Catalog No: #34568

Package Size: #34568-1 50ul #34568-2 100ul

Orders: [order@signalwayantibody.com](mailto:order@signalwayantibody.com)Support: [tech@signalwayantibody.com](mailto:tech@signalwayantibody.com)

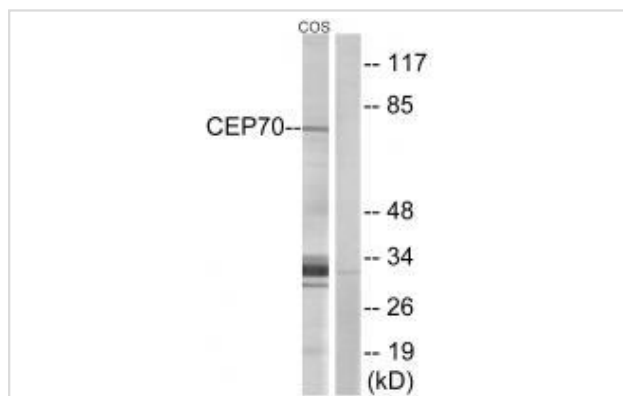
## Description

Product Name	CEP70 Antibody
Host Species	Rabbit
Clonality	Polyclonal
Purification	The antibody was affinity-purified from rabbit antiserum by affinity-chromatography using epitope-specific immunogen.
Applications	WB
Species Reactivity	Hu Ms
Specificity	The antibody detects endogenous levels of total CEP70 protein.
Immunogen Type	Peptide
Immunogen Description	Synthesized peptide derived from internal of human CEP70.
Target Name	CEP70
Other Names	BITE; centrosomal protein of 70 kDa;
Accession No.	Swiss-Prot: Q8NHQ1NCBI Gene ID: 80321
Uniprot	Q8NHQ1
GeneID	80321;
SDS-PAGE MW	70kd
Concentration	1.0mg/ml
Formulation	Rabbit IgG in phosphate buffered saline (without Mg <sup>2+</sup> and Ca <sup>2+</sup> ), pH 7.4, 150mM NaCl, 0.02% sodium azide and 50% glycerol.
Storage	Store at -20°C

## Application Details

Western blotting: 1:500~1:3000

## Images



Western blot analysis of extracts from COS cells, using CEP70 antibody #34568.

## Background

---

Plays a role in the organization of both preexisting and nascent microtubules in interphase cells. During mitosis, required for the organization and orientation of the mitotic spindle.

Tschan M.P., Submitted (NOV-1999) to the EMBL/GenBank/DDBJ databases.

Ota T., Nat. Genet. 36:40-45(2004).

The MGC Project Team; Genome Res. 14:2121-2127(2004).

---

Note: This product is for in vitro research use only