

WASP Antibody

Catalog No: #21632

Package Size: #21632-1 50ul #21632-2 100ul

Orders: order@signalwayantibody.comSupport: tech@signalwayantibody.com

Description

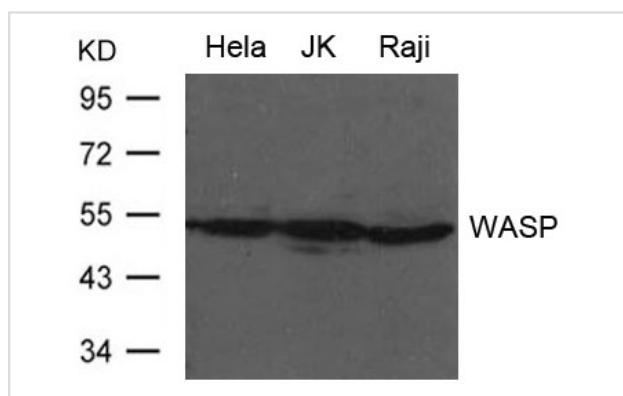
Product Name	WASP Antibody
Host Species	Rabbit
Clonality	Polyclonal
Purification	Antibodies were produced by immunizing rabbits with synthetic peptide and KLH conjugates. Antibodies were purified by affinity-chromatography using epitope-specific peptide.
Applications	WB
Species Reactivity	Hu Ms Rt
Specificity	The antibody detects endogenous level of total WASP protein.
Immunogen Type	Peptide-KLH
Immunogen Description	Peptide sequence around aa.289~293 (L-I-Y-D-F) derived from Human WASP.
Target Name	WASP
Other Names	THC; THC1; IMD2
Accession No.	Swiss-Prot: P42768NCBI Protein: NP_000368.1
Uniprot	P42768
GeneID	7454;
Concentration	1.0mg/ml
Formulation	Supplied at 1.0mg/mL in phosphate buffered saline (without Mg ²⁺ and Ca ²⁺), pH 7.4, 150mM NaCl, 0.02% sodium azide and 50% glycerol.
Storage	Store at -20°C for long term preservation (recommended). Store at 4°C for short term use.

Application Details

Predicted MW: 53kd

Western blotting: 1:500~1:1000

Images



Western blot analysis of extract from HeLa, JK and Raji cells using WASP Antibody #21632

Background

Effector protein for Rho-type GTPases. Regulates actin filament reorganization via its interaction with the Arp2/3 complex. Important for efficient actin polymerization. Possible regulator of lymphocyte and platelet function. Mediates actin filament reorganization and the formation of actin pedestals upon infection by pathogenic bacteria.

Kolluri R., Tolia K.F., Carpenter C.L., Rosen F.S. Proc. Natl. Acad. Sci. U.S.A. 93:5615-5618(1996)

Ramesh N., Anton I.M., Hartwig J.H., Geha R.S. Proc. Natl. Acad. Sci. U.S.A. 94:14671-14676(1997)

Cory G.O.C., Cramer R., Blanchoin L., Ridley A.J. Mol. Cell 11:1229-1239(2003)

Note: This product is for in vitro research use only