

## CKLF2 Antibody

Catalog No: #34593

Package Size: #34593-1 50ul #34593-2 100ul

Orders: [order@signalwayantibody.com](mailto:order@signalwayantibody.com)Support: [tech@signalwayantibody.com](mailto:tech@signalwayantibody.com)

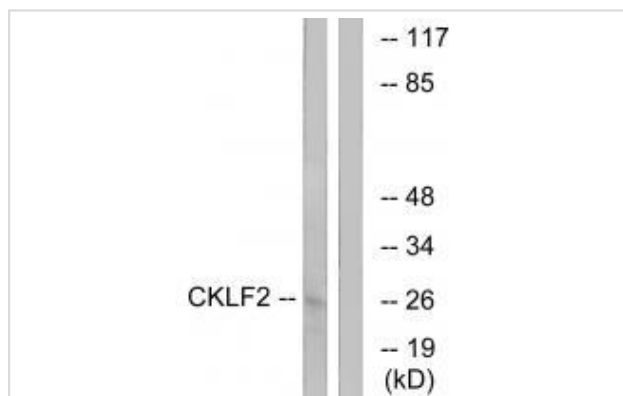
## Description

Product Name	CKLF2 Antibody
Host Species	Rabbit
Clonality	Polyclonal
Purification	The antibody was affinity-purified from rabbit antiserum by affinity-chromatography using epitope-specific immunogen.
Applications	WB
Species Reactivity	Hu
Specificity	The antibody detects endogenous levels of total CKLF2 protein.
Immunogen Type	Peptide
Immunogen Description	Synthesized peptide derived from internal of human CKLF2.
Target Name	CKLF2
Other Names	chemokine-like factor 2; CKLF-like MARVEL transmembrane domain containing 2; CKLF2; CKLFSF2;
Accession No.	Swiss-Prot: Q8TAZ6NCBI Gene ID: 146225
Uniprot	Q8TAZ6
GeneID	146225;
SDS-PAGE MW	27kd
Concentration	1.0mg/ml
Formulation	Rabbit IgG in phosphate buffered saline (without Mg <sup>2+</sup> and Ca <sup>2+</sup> ), pH 7.4, 150mM NaCl, 0.02% sodium azide and 50% glycerol.
Storage	Store at -20°C

## Application Details

Western blotting: 1:500~1:3000

## Images



Western blot analysis of extracts from K562 cells, using CKLF2 antibody #34593.

## Background

---

This gene belongs to the chemokine-like factor gene superfamily, a novel family that links the chemokine and the transmembrane 4 superfamilies of signaling molecules. The protein encoded by this gene may play an important role in testicular development.

Han W., Genomics 81:609-617(2003).

Ota T., Nat. Genet. 36:40-45(2004).

The MGC Project Team; Genome Res. 14:2121-2127(2004).

---

Note: This product is for in vitro research use only