

CKLF3 Antibody

Catalog No: #34594



Package Size: #34594-1 50ul #34594-2 100ul

Orders: order@signalwayantibody.com
Support: tech@signalwayantibody.com

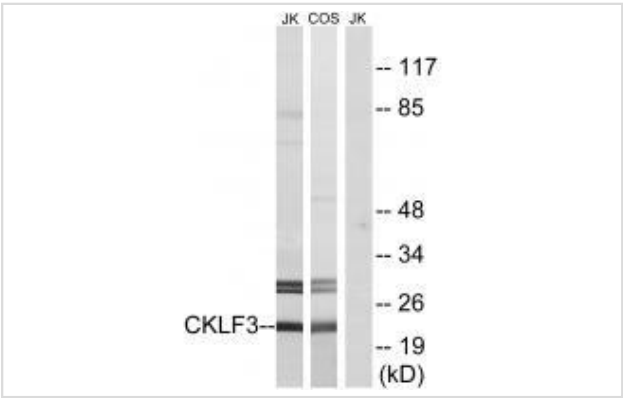
Description

Product Name	CKLF3 Antibody
Host Species	Rabbit
Clonality	Polyclonal
Purification	The antibody was affinity-purified from rabbit antiserum by affinity-chromatography using epitope-specific immunogen.
Applications	WB
Species Reactivity	Hu
Specificity	The antibody detects endogenous levels of total CKLF3 protein.
Immunogen Type	Peptide
Immunogen Description	Synthesized peptide derived from N-terminal of human CKLF3.
Target Name	CKLF3
Other Names	CKLF-like MARVEL transmembrane domain-containing protein 3; Chemokine-like factor superfamily member 3; CMTM3; CKLFSF3;
Accession No.	Swiss-Prot: Q96MX0NCBI Gene ID: 123920
Uniprot	Q96MX0
GeneID	123920;
SDS-PAGE MW	22kd
Concentration	1.0mg/ml
Formulation	Rabbit IgG in phosphate buffered saline (without Mg2+ and Ca2+), pH 7.4, 150mM NaCl, 0.02% sodium azide and 50% glycerol.
Storage	Store at -20°C

Application Details

Western blotting: 1:500~1:3000

Images



Western blot analysis of extracts from Jurkat cells and COS cells, using CKLF3 antibody #34594.

Background

This gene belongs to the chemokine-like factor gene superfamily, a novel family that is similar to the chemokine and the transmembrane 4 superfamilies of signaling molecules. This gene is one of several chemokine-like factor genes located in a cluster on chromosome 16. Alternatively spliced transcript variants containing different 5' UTRs, but encoding the same protein, have been identified.

Han W., Genomics 81:609-617(2003).

Liu Y., Submitted (OCT-2002) to the EMBL/GenBank/DDBJ databases.

Ota T., Nat. Genet. 36:40-45(2004).

Note: This product is for in vitro research use only