

## C1QB Antibody

Catalog No: #34607

Package Size: #34607-1 50ul #34607-2 100ul

Orders: [order@signalwayantibody.com](mailto:order@signalwayantibody.com)Support: [tech@signalwayantibody.com](mailto:tech@signalwayantibody.com)

## Description

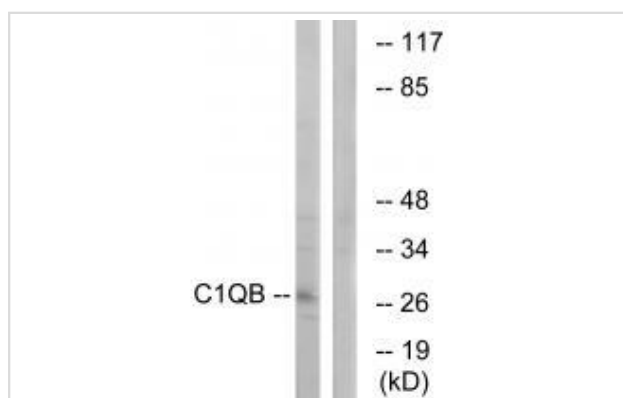
Product Name	C1QB Antibody
Host Species	Rabbit
Clonality	Polyclonal
Purification	The antibody was affinity-purified from rabbit antiserum by affinity-chromatography using epitope-specific immunogen.
Applications	WB IHC IF
Species Reactivity	Hu
Specificity	The antibody detects endogenous levels of total C1QB protein.
Immunogen Type	Peptide
Immunogen Description	Synthesized peptide derived from internal of human C1QB.
Target Name	C1QB
Other Names	complement C1q subcomponent B; complement component 1; q subcomponent; B;
Accession No.	Swiss-Prot: P02746NCBI Gene ID: 713
Uniprot	P02746
GeneID	713;
SDS-PAGE MW	28kd
Concentration	1.0mg/ml
Formulation	Rabbit IgG in phosphate buffered saline (without Mg <sup>2+</sup> and Ca <sup>2+</sup> ), pH 7.4, 150mM NaCl, 0.02% sodium azide and 50% glycerol.
Storage	Store at -20°C

## Application Details

Western blotting: 1:500~1:3000

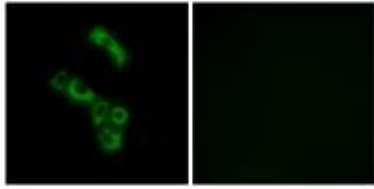
Immunofluorescence: 1:100~1:500

## Images



Western blot analysis of extracts from Jurkat cells, using C1QB antibody #34607.

Immunofluorescence analysis of A549 cells, using C1QB antibody #34607.



## Background

C1q associates with the proenzymes C1r and C1s to yield C1, the first component of the serum complement system. The collagen-like regions of C1q interact with the  $\text{Ca}^{2+}$ -dependent C1r2C1s2 proenzyme complex, and efficient activation of C1 takes place on interaction of the globular heads of C1q with the Fc regions of IgG or IgM antibody present in immune complexes.

Reid K.B.M.; Biochem. J. 231:729-735(1985).

Gregory S.G., Nature 441:315-321(2006).

The MGC Project Team; Genome Res. 14:2121-2127(2004).

Note: This product is for in vitro research use only