

## C1S Antibody

Catalog No: #34610

Package Size: #34610-1 50ul #34610-2 100ul

Orders: [order@signalwayantibody.com](mailto:order@signalwayantibody.com)Support: [tech@signalwayantibody.com](mailto:tech@signalwayantibody.com)

## Description

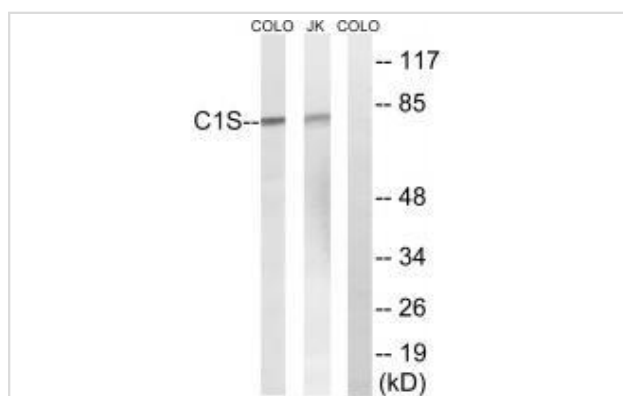
Product Name	C1S Antibody
Host Species	Rabbit
Clonality	Polyclonal
Purification	The antibody was affinity-purified from rabbit antiserum by affinity-chromatography using epitope-specific immunogen.
Applications	WB IHC
Species Reactivity	Hu
Specificity	The antibody detects endogenous levels of total C1S protein.
Immunogen Type	Peptide
Immunogen Description	Synthesized peptide derived from internal of human C1S.
Target Name	C1S
Other Names	28S ribosomal protein S7; mitochondrial; S7mt; MRP-S7; bMRP27a
Accession No.	Swiss-Prot: P09871NCBI Gene ID: 716
Uniprot	P09871
GeneID	716;
SDS-PAGE MW	77kd
Concentration	1.0mg/ml
Formulation	Rabbit IgG in phosphate buffered saline (without Mg <sup>2+</sup> and Ca <sup>2+</sup> ), pH 7.4, 150mM NaCl, 0.02% sodium azide and 50% glycerol.
Storage	Store at -20°C

## Application Details

Western blotting: 1:500~1:3000

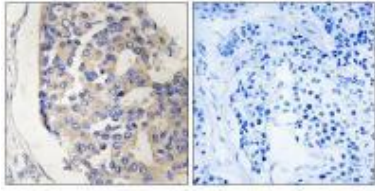
Immunohistochemistry: 1:50~1:100

## Images



Western blot analysis of extracts from Jurkat cells and COLO cells, using C1S antibody #34610.

Immunohistochemistry analysis of paraffin-embedded human breast carcinoma tissue, using C1S antibody #34610.



## Background

C1s B chain is a serine protease that combines with C1q and C1r to form C1, the first component of the classical pathway of the complement system.

C1r activates C1s so that it can, in turn, activate C2 and C4.

McKinnon C.M., Eur. J. Biochem. 169:547-553(1987).

Tosi M., Biochemistry 26:8516-8524(1987).

Kusumoto H., Proc. Natl. Acad. Sci. U.S.A. 85:7307-7311(1988).

Note: This product is for in vitro research use only