

NCAPH Antibody

Catalog No: #34615

Package Size: #34615-1 50ul #34615-2 100ul

Orders: order@signalwayantibody.comSupport: tech@signalwayantibody.com

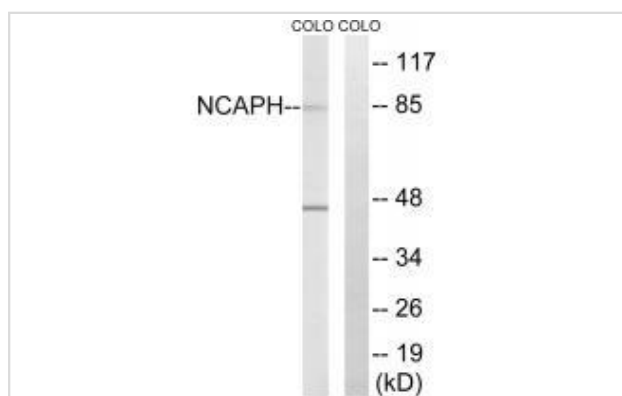
Description

Product Name	NCAPH Antibody
Host Species	Rabbit
Clonality	Polyclonal
Purification	The antibody was affinity-purified from rabbit antiserum by affinity-chromatography using epitope-specific immunogen.
Applications	WB
Species Reactivity	Hu
Specificity	The antibody detects endogenous levels of total NCAPH protein.
Immunogen Type	Peptide
Immunogen Description	Synthesized peptide derived from internal of human NCAPH.
Target Name	NCAPH
Other Names	Condensin complex subunit 2; Non-SMC condensin I complex subunit H; Barren homolog protein 1; Chromosome-associated protein H; hCAP-H
Accession No.	Swiss-Prot: Q15003NCBI Gene ID: 23397
Uniprot	Q15003
GeneID	23397;
SDS-PAGE MW	83kd
Concentration	1.0mg/ml
Formulation	Rabbit IgG in phosphate buffered saline (without Mg ²⁺ and Ca ²⁺), pH 7.4, 150mM NaCl, 0.02% sodium azide and 50% glycerol.
Storage	Store at -20°C

Application Details

Western blotting: 1:500~1:3000

Images



Western blot analysis of extracts from COLO cells, using NCAPH antibody #34615.

Background

Regulatory subunit of the condensin complex, a complex required for conversion of interphase chromatin into mitotic-like condense chromosomes. The condensin complex probably introduces positive supercoils into relaxed DNA in the presence of type I topoisomerases and converts nicked DNA into positive knotted forms in the presence of type II topoisomerases.

Nomura N., DNA Res. 1:223-229(1994).

The MGC Project Team; Genome Res. 14:2121-2127(2004).

Cabello O.A., Mol. Biol. Cell 12:3527-3537(2001).

Note: This product is for in vitro research use only