

SLK1 Antibody

Catalog No: #21334

Package Size: #21334-1 50ul #21334-2 100ul

Orders: order@signalwayantibody.comSupport: tech@signalwayantibody.com

Description

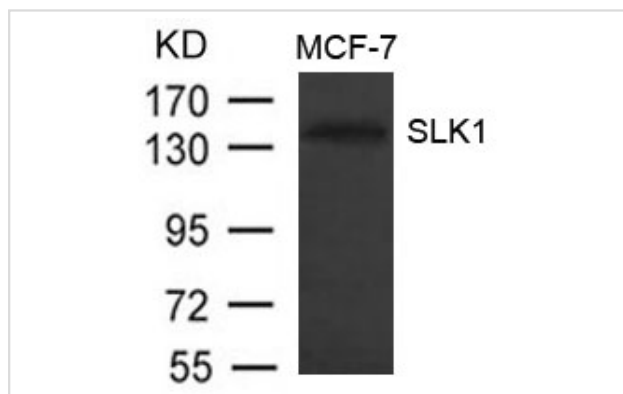
Product Name	SLK1 Antibody
Host Species	Rabbit
Clonality	Polyclonal
Purification	Antibodies were produced by immunizing rabbits with synthetic peptide and KLH conjugates. Antibodies were purified by affinity-chromatography using epitope-specific peptide.
Applications	WB
Species Reactivity	Hu
Specificity	The antibody detects endogenous level of total SLK1 protein.
Immunogen Type	Peptide-KLH
Immunogen Description	Peptide sequence around aa.1187~1191(K-T-L-E-E) derived from Human SLK1.
Target Name	SLK1
Other Names	STK2; STE20-like kinase; STE20-like serine/threonine-protein kinase; Serine/threonine-protein kinase 2;
Accession No.	Swiss-Prot: Q9H2G2NCBI Protein: NP_055535.2
Uniprot	Q9H2G2
GeneID	9748;
Concentration	1.0mg/ml
Formulation	Supplied at 1.0mg/mL in phosphate buffered saline (without Mg ²⁺ and Ca ²⁺), pH 7.4, 150mM NaCl, 0.02% sodium azide and 50% glycerol.
Storage	Store at -20°C for long term preservation (recommended). Store at 4°C for short term use.

Application Details

Predicted MW: 145kd

Western blotting: 1:500~1:1000

Images



Western blot analysis of extract from MCF-7 cells using SLK1 Antibody #21334

Background

Mediates apoptosis and actin stress fiber dissolution.

Note: This product is for in vitro research use only