

CBCP6 Antibody

Catalog No: #34638

Package Size: #34638-1 50ul #34638-2 100ul

Orders: order@signalwayantibody.comSupport: tech@signalwayantibody.com

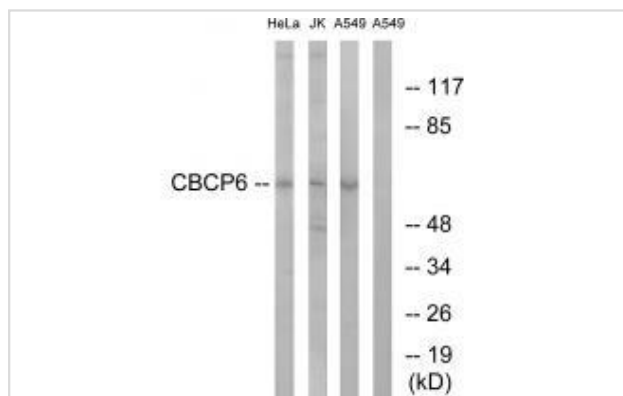
Description

Product Name	CBCP6 Antibody
Host Species	Rabbit
Clonality	Polyclonal
Purification	The antibody was affinity-purified from rabbit antiserum by affinity-chromatography using epitope-specific immunogen.
Applications	WB
Species Reactivity	Hu
Specificity	The antibody detects endogenous levels of total CBCP6 protein.
Immunogen Type	Peptide
Immunogen Description	Synthesized peptide derived from internal of human CBCP6.
Target Name	CBCP6
Other Names	ATP/GTP-binding protein-like 4; CBPC6; CCP6; cytosolic carboxypeptidase 6; EC 3.4.17.-
Accession No.	Swiss-Prot: Q5VU57NCBI Gene ID: 84871
Uniprot	Q5VU57
GeneID	84871;
SDS-PAGE MW	62kd
Concentration	1.0mg/ml
Formulation	Rabbit IgG in phosphate buffered saline (without Mg ²⁺ and Ca ²⁺), pH 7.4, 150mM NaCl, 0.02% sodium azide and 50% glycerol.
Storage	Store at -20°C

Application Details

Western blotting: 1:500~1:3000

Images



Western blot analysis of extracts from HeLa cells, Jurkat cells and A549 cells, using CBCP6 antibody #34638.

Background

Metalloprotease that mediates deglutamylation of target proteins. Catalyzes the deglutamylation of polyglutamate side chains generated by post-translational polyglutamylation in proteins such as tubulins. Also removes gene-encoded polyglutamates from the carboxy-terminus of target proteins such as MYLK. Acts as a long-chain deglutaminase and specifically shortens long polyglutamate chains, while it is not able to remove the branching point glutamate, a process catalyzed by AGL5/CCP5 By similarity.

Ota T., Nat. Genet. 36:40-45(2004).

Gregory S.G., Nature 441:315-321(2006).

Note: This product is for in vitro research use only