

DOCK1 Antibody

Catalog No: #34642

Package Size: #34642-1 50ul #34642-2 100ul

Orders: order@signalwayantibody.comSupport: tech@signalwayantibody.com

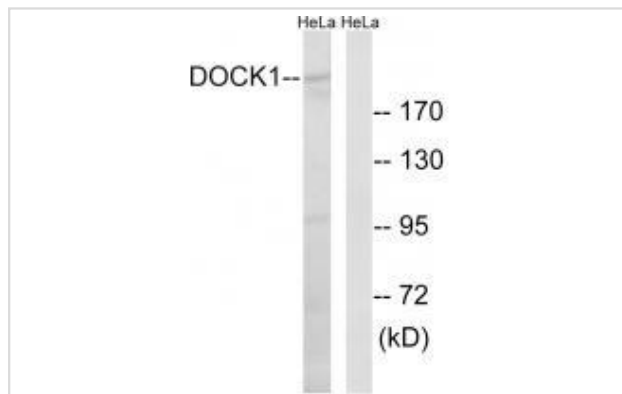
Description

Product Name	DOCK1 Antibody
Host Species	Rabbit
Clonality	Polyclonal
Purification	The antibody was affinity-purified from rabbit antiserum by affinity-chromatography using epitope-specific immunogen.
Applications	WB
Species Reactivity	Hu
Specificity	The antibody detects endogenous levels of total DOCK1 protein.
Immunogen Type	Peptide
Immunogen Description	Synthesized peptide derived from internal of human DOCK1.
Target Name	DOCK1
Other Names	180 kDa protein downstream of CRK; dedicator of cytokinesis protein 1; DOC1; DOCK180;
Accession No.	Swiss-Prot: Q14185NCBI Gene ID: 1793
Uniprot	Q14185
GeneID	1793;
SDS-PAGE MW	215kd
Concentration	1.0mg/ml
Formulation	Rabbit IgG in phosphate buffered saline (without Mg ²⁺ and Ca ²⁺), pH 7.4, 150mM NaCl, 0.02% sodium azide and 50% glycerol.
Storage	Store at -20°C

Application Details

Western blotting: 1:500~1:3000

Images



Western blot analysis of extracts from HeLa cells, using DOCK1 antibody #34642.

Background

Involved in cytoskeletal rearrangements required for phagocytosis of apoptotic cells and cell motility. Functions as a guanine nucleotide exchange factor (GEF), which activates Rac Rho small GTPases by exchanging bound GDP for free GTP. Its GEF activity may be enhanced by ELMO1.

Hasegawa H., Mol. Cell. Biol. 16:1770-1776(1996).

Deloukas P., Nature 429:375-381(2004).

Matsuda M., J. Biol. Chem. 271:14468-14472(1996).

Note: This product is for in vitro research use only