

RFX2 Antibody

Catalog No: #34650

Package Size: #34650-1 50ul #34650-2 100ul

Orders: order@signalwayantibody.comSupport: tech@signalwayantibody.com

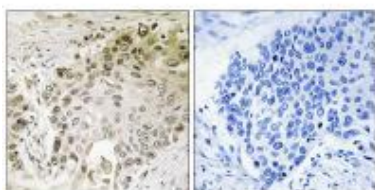
Description

Product Name	RFX2 Antibody
Host Species	Rabbit
Clonality	Polyclonal
Purification	The antibody was affinity-purified from rabbit antiserum by affinity-chromatography using epitope-specific immunogen.
Applications	IHC
Species Reactivity	Hu
Specificity	The antibody detects endogenous levels of total RFX2 protein.
Immunogen Type	Peptide
Immunogen Description	Synthesized peptide derived from internal of human RFX2.
Target Name	RFX2
Other Names	DNA-binding protein RFX2; Regulatory factor X 2;
Accession No.	Swiss-Prot: P48378NCBI Gene ID: 5990
Uniprot	P48378
GeneID	5990;
SDS-PAGE MW	80kd
Concentration	1.0mg/ml
Formulation	Rabbit IgG in phosphate buffered saline (without Mg ²⁺ and Ca ²⁺), pH 7.4, 150mM NaCl, 0.02% sodium azide and 50% glycerol.
Storage	Store at -20°C

Application Details

Immunohistochemistry: 1:50~1:100

Images



Immunohistochemistry analysis of paraffin-embedded human lung carcinoma tissue using RFX2 antibody #34650.

Background

a member of the regulatory factor X gene family, which encodes transcription factors that contain a highly-conserved winged helix DNA binding domain. The protein encoded by structurally related to regulatory factors X1, X3, X4, and X5. It is a transcriptional activator that can bind DNA as a monomer or as a heterodimer with other RFX family members. This protein can bind to cis elements in the promoter of the IL-5 receptor alpha gene. Two transcript variants encoding different isoforms have been described for this gene, and both variants utilize alternative polyadenylation sites.

Reith W., Mol. Cell. Biol. 14:1230-1244(1994).

Sjoeblom T., Science 314:268-274(2006).

Note: This product is for in vitro research use only