

## POLR1B Antibody

Catalog No: #34651

Package Size: #34651-1 50ul #34651-2 100ul

Orders: order@signalwayantibody.com

Support: tech@signalwayantibody.com

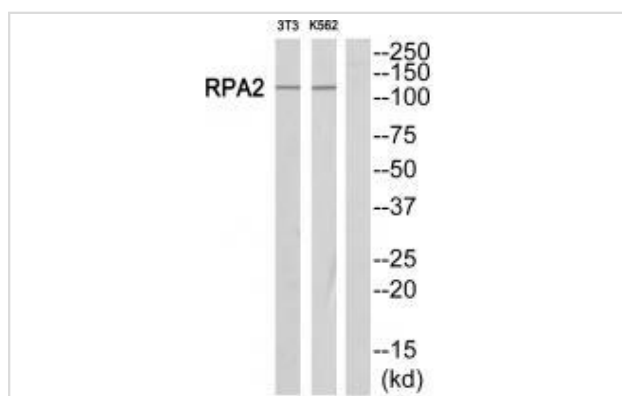
## Description

Product Name	POLR1B Antibody
Host Species	Rabbit
Clonality	Polyclonal
Purification	The antibody was affinity-purified from rabbit antiserum by affinity-chromatography using epitope-specific immunogen.
Applications	WB
Species Reactivity	Hu Ms Rt
Specificity	The antibody detects endogenous levels of total POLR1B protein.
Immunogen Type	Peptide
Immunogen Description	Synthesized peptide derived from C-terminal of human POLR1B.
Target Name	POLR1B
Other Names	DNA-directed RNA polymerase I 135 kDa polypeptide; DNA-directed RNA polymerase I 135kDa polypeptide; DNA-directed RNA polymerase I subunit RPA2; FLJ10816; FLJ21921
Accession No.	Swiss-Prot: Q9H9Y6 NCBI Gene ID: 84172
Uniprot	Q9H9Y6
GeneID	84172;
SDS-PAGE MW	129kd
Concentration	1.0mg/ml
Formulation	Rabbit IgG in phosphate buffered saline (without Mg <sup>2+</sup> and Ca <sup>2+</sup> ), pH 7.4, 150mM NaCl, 0.02% sodium azide and 50% glycerol.
Storage	Store at -20°C

## Application Details

Western blotting: 1:500~1:3000

## Images



Western blot analysis of extracts from Jurkat/NIH-3T3 cells, using POLR1B antibody #34651.

## Background

DNA-dependent RNA polymerase catalyzes the transcription of DNA into RNA using the four ribonucleoside triphosphates as substrates. Second largest core component of RNA polymerase I which synthesizes ribosomal RNA precursors. Proposed to contribute to the polymerase catalytic activity and forms the polymerase active center together with the largest subunit. Pol I is composed of mobile elements and RPA2 is part of the core element with the central large cleft and probably a clamp element that moves to open and close the cleft By similarity.

Ota T., Nat. Genet. 36:40-45(2004).

Hillier L.W., Nature 434:724-731(2005).

Miller G., EMBO J. 20:1373-1382(2001).

---

Note: This product is for in vitro research use only