

CD3EAP Antibody

Catalog No: #34652

Package Size: #34652-1 50ul #34652-2 100ul

Orders: order@signalwayantibody.comSupport: tech@signalwayantibody.com

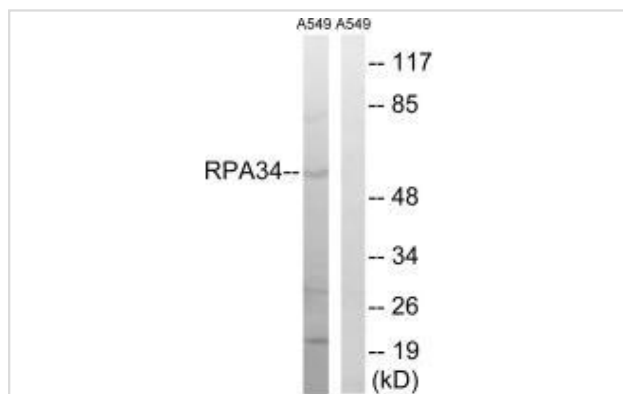
Description

Product Name	CD3EAP Antibody
Host Species	Rabbit
Clonality	Polyclonal
Purification	The antibody was affinity-purified from rabbit antiserum by affinity-chromatography using epitope-specific immunogen.
Applications	WB
Species Reactivity	Hu
Specificity	The antibody detects endogenous levels of total CD3EAP protein.
Immunogen Type	Peptide
Immunogen Description	Synthesized peptide derived from internal of human CD3EAP.
Target Name	CD3EAP
Other Names	antisense to ERCC-1; CAST; CD3-epsilon-associated protein; CD3e-associated protein; CD3EAP
Accession No.	Swiss-Prot: O15446NCBI Gene ID: 10849
Uniprot	O15446
GeneID	10849;
SDS-PAGE MW	55kd
Concentration	1.0mg/ml
Formulation	Rabbit IgG in phosphate buffered saline (without Mg ²⁺ and Ca ²⁺), pH 7.4, 150mM NaCl, 0.02% sodium azide and 50% glycerol.
Storage	Store at -20°C

Application Details

Western blotting: 1:500~1:3000

Images



Western blot analysis of extracts from A549 cells, using CD3EAP antibody #34652.

Background

DNA-dependent RNA polymerase catalyzes the transcription of DNA into RNA using the four ribonucleoside triphosphates as substrates. Component of RNA polymerase I which synthesizes ribosomal RNA precursors. Isoform 1 is involved in UBTF-activated transcription, presumably at a step following PIC formation. Isoform 2 has been described as a component of preformed T-cell receptor (TCR) complex.

Whitehead C.M., Chromosoma 106:493-502(1997).

Yamazaki T., J. Biol. Chem. 274:18173-18180(1999).

The MGC Project Team; Genome Res. 14:2121-2127(2004).

Note: This product is for in vitro research use only