

DNAL1 Antibody

Catalog No: #34660

Package Size: #34660-1 50ul #34660-2 100ul

Orders: order@signalwayantibody.comSupport: tech@signalwayantibody.com

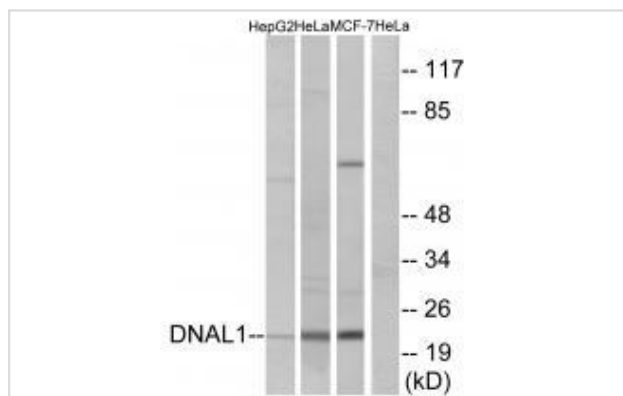
Description

Product Name	DNAL1 Antibody
Host Species	Rabbit
Clonality	Polyclonal
Purification	The antibody was affinity-purified from rabbit antiserum by affinity-chromatography using epitope-specific immunogen.
Applications	WB
Species Reactivity	Hu Ms Rt
Specificity	The antibody detects endogenous levels of total DNAL1 protein.
Immunogen Type	Peptide
Immunogen Description	Synthesized peptide derived from internal of human DNAL1.
Target Name	DNAL1
Other Names	C14orf168; dynein light chain 1; axonemal;
Accession No.	Swiss-Prot: Q4LDG9NCBI Gene ID: 83544
Uniprot	Q4LDG9
GeneID	83544;
SDS-PAGE MW	22kd
Concentration	1.0mg/ml
Formulation	Rabbit IgG in phosphate buffered saline (without Mg ²⁺ and Ca ²⁺), pH 7.4, 150mM NaCl, 0.02% sodium azide and 50% glycerol.
Storage	Store at -20°C

Application Details

Western blotting: 1:500~1:3000

Images



Western blot analysis of extracts from HepG2 cells, HeLa cells and MCF-7 cells, using DNAL1 antibody #34660.

Background

This gene encodes an axonemal dynein light chain which functions as a component of the outer dynein arms complex. This complex acts as the molecular motor that provides the force to move cilia in an ATP-dependent manner. The encoded protein is expressed in tissues with motile cilia or flagella and may be involved in the movement of sperm flagella. Alternate splicing results in multiple transcript variants.

Horvath J., Am. J. Respir. Cell Mol. Biol. 33:41-47(2005).

The German cDNA consortium; Submitted (JAN-2005) to the EMBL/GenBank/DDBJ databases.

The MGC Project Team; Genome Res. 14:2121-2127(2004).

Note: This product is for in vitro research use only