

RNF138 Antibody

Catalog No: #34663

Package Size: #34663-1 50ul #34663-2 100ul

Orders: order@signalwayantibody.comSupport: tech@signalwayantibody.com

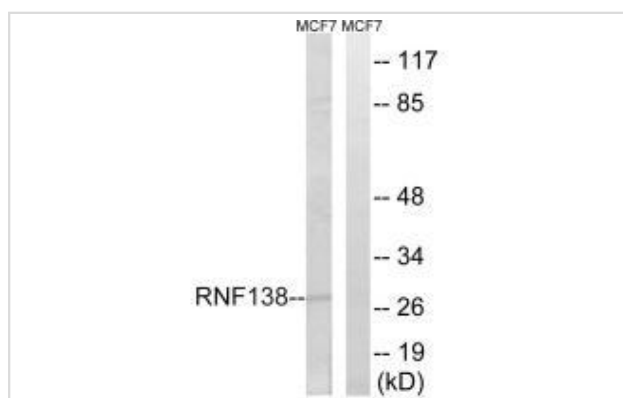
Description

Product Name	RNF138 Antibody
Host Species	Rabbit
Clonality	Polyclonal
Purification	The antibody was affinity-purified from rabbit antiserum by affinity-chromatography using epitope-specific immunogen.
Applications	WB
Species Reactivity	Hu
Specificity	The antibody detects endogenous levels of total RNF138 protein.
Immunogen Type	Peptide
Immunogen Description	Synthesized peptide derived from internal of human RNF138.
Target Name	RNF138
Other Names	E3 ubiquitin-protein ligase RNF138; EC 6.3.2.-; RING finger protein 138; Nemo-like kinase-associated RING finger protein; NLK-associated RING finger protein
Accession No.	Swiss-Prot: Q8WVD3NCBI Gene ID: 51444
Uniprot	Q8WVD3
GeneID	51444;
SDS-PAGE MW	28kd
Concentration	1.0mg/ml
Formulation	Rabbit IgG in phosphate buffered saline (without Mg ²⁺ and Ca ²⁺), pH 7.4, 150mM NaCl, 0.02% sodium azide and 50% glycerol.
Storage	Store at -20°C

Application Details

Western blotting: 1:500~1:3000

Images



Western blot analysis of extracts from MCF-7 cells, using RNF138 antibody #34663.

Background

E3 ubiquitin-protein ligase. Together with NLK, involved in the ubiquitination and degradation of TCF/LEF. Also exhibits auto-ubiquitination activity in combination with UBE2K. May act as a negative regulator in the Wnt/beta-catenin-mediated signaling pathway.

Wang L., Submitted (APR-2000) to the EMBL/GenBank/DDBJ databases.

Ota T., Nat. Genet. 36:40-45(2004).

Kalnine N., Submitted (MAY-2003) to the EMBL/GenBank/DDBJ databases.

Note: This product is for in vitro research use only