

UBR1 Antibody

Catalog No: #34664

Package Size: #34664-1 50ul #34664-2 100ul

Orders: order@signalwayantibody.comSupport: tech@signalwayantibody.com

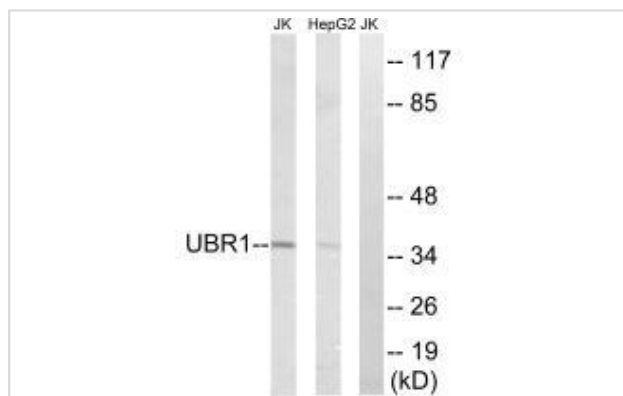
Description

Product Name	UBR1 Antibody
Host Species	Rabbit
Clonality	Polyclonal
Purification	The antibody was affinity-purified from rabbit antiserum by affinity-chromatography using epitope-specific immunogen.
Applications	WB
Species Reactivity	Hu Ms
Specificity	The antibody detects endogenous levels of total UBR1 protein.
Immunogen Type	Peptide
Immunogen Description	Synthesized peptide derived from internal of human UBR1.
Target Name	UBR1
Other Names	EC 6.3.2.-; Ubiquitin ligase E3 alpha-I;
Accession No.	Swiss-Prot: Q8IWW7NCBI Gene ID: 197131
Uniprot	Q8IWW7
GeneID	197131;
SDS-PAGE MW	36kd
Concentration	1.0mg/ml
Formulation	Rabbit IgG in phosphate buffered saline (without Mg ²⁺ and Ca ²⁺), pH 7.4, 150mM NaCl, 0.02% sodium azide and 50% glycerol.
Storage	Store at -20°C

Application Details

Western blotting: 1:500~1:3000

Images



Western blot analysis of extracts from Jurkat cells and HepG2 cells, using UBR1 antibody #34664.

Background

E3 ubiquitin-protein ligase which is a component of the N-end rule pathway. Recognizes and binds to proteins bearing specific N-terminal residues that are destabilizing according to the N-end rule, leading to their ubiquitination and subsequent degradation. May be involved in pancreatic homeostasis. Binds leucine and is a negative regulator of the leucine-mTOR signaling pathway, thereby controlling cell growth.

Kwak K.S., Cancer Res. 64:8193-8198(2004).

Dgany O., Am. J. Hum. Genet. 71:1467-1474(2002).

Ota T., Nat. Genet. 36:40-45(2004).

Note: This product is for in vitro research use only