

EFEMP1 Antibody

Catalog No: #34665



Package Size: #34665-1 50ul #34665-2 100ul

Orders: order@signalwayantibody.com
Support: tech@signalwayantibody.com

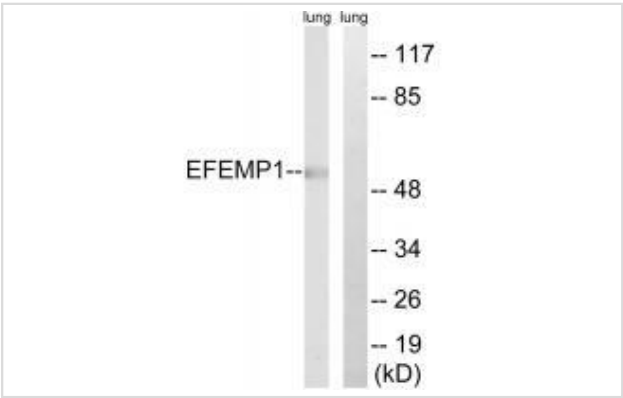
Description

Product Name	EFEMP1 Antibody
Host Species	Rabbit
Clonality	Polyclonal
Purification	The antibody was affinity-purified from rabbit antiserum by affinity-chromatography using epitope-specific immunogen.
Applications	WB
Species Reactivity	Hu Rt
Specificity	The antibody detects endogenous levels of total EFEMP1 protein.
Immunogen Type	Peptide
Immunogen Description	Synthesized peptide derived from internal of human EFEMP1.
Target Name	EFEMP1
Other Names	EGF-containing fibulin-like extracellular matrix protein 1; Fibulin-3; FIBL-3; Fibrillin-like protein; Extracellular protein S1-5
Accession No.	Swiss-Prot: Q12805NCBI Gene ID: 2202
Uniprot	Q12805
GeneID	2202;
SDS-PAGE MW	55kd
Concentration	1.0mg/ml
Formulation	Rabbit IgG in phosphate buffered saline (without Mg2+ and Ca2+), pH 7.4, 150mM NaCl, 0.02% sodium azide and 50% glycerol.
Storage	Store at -20°C

Application Details

Western blotting: 1:500~1:3000

Images



Western blot analysis of extracts from rat lung cells, using EFEMP1 antibody #34665.

Background

Binds EGFR, the EGF receptor, inducing EGFR autophosphorylation and the activation of downstream signaling pathways. May play a role in cell adhesion and migration. May function as a negative regulator of chondrocyte differentiation. In the olfactory epithelium, it may regulate glial cell migration, differentiation and the ability of glial cells to support neuronal neurite outgrowth.

Lecka-Czernik B., Mol. Cell. Biol. 15:120-128(1995).

Ikegawa S., Genomics 35:590-592(1996).

Giltay R., Matrix Biol. 18:469-480(1999).

Note: This product is for in vitro research use only