

ELOVL1 Antibody

Catalog No: #34670

Package Size: #34670-1 50ul #34670-2 100ul

Orders: order@signalwayantibody.comSupport: tech@signalwayantibody.com

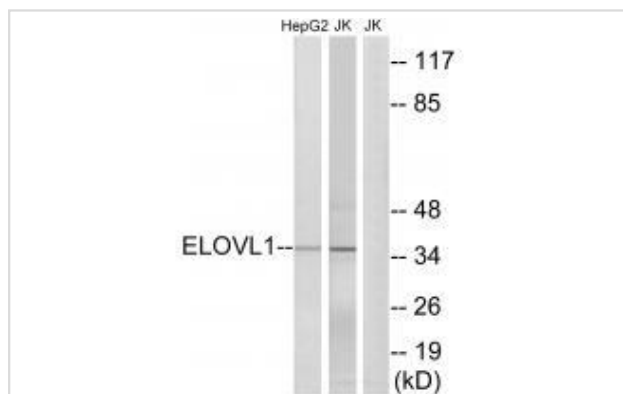
Description

Product Name	ELOVL1 Antibody
Host Species	Rabbit
Clonality	Polyclonal
Purification	The antibody was affinity-purified from rabbit antiserum by affinity-chromatography using epitope-specific immunogen.
Applications	WB
Species Reactivity	Hu Ms
Specificity	The antibody detects endogenous levels of total ELOVL1 protein.
Immunogen Type	Peptide
Immunogen Description	Synthesized peptide derived from internal of human ELOVL1.
Target Name	ELOVL1
Other Names	Elongation of very long chain fatty acids protein 1; ELOVL1; SSC1; CGI-88;
Accession No.	Swiss-Prot: Q9BW60NCBI Gene ID: 64834
Uniprot	Q9BW60
GeneID	64834;
SDS-PAGE MW	35kd
Concentration	1.0mg/ml
Formulation	Rabbit IgG in phosphate buffered saline (without Mg ²⁺ and Ca ²⁺), pH 7.4, 150mM NaCl, 0.02% sodium azide and 50% glycerol.
Storage	Store at -20°C

Application Details

Western blotting: 1:500~1:3000

Images



Western blot analysis of extracts from HepG2 cells and Jurkat cells, using ELOVL1 antibody #34670.

Background

Condensing enzyme that catalyzes the synthesis of both saturated and monounsaturated very long chain fatty acids (VLCFAs). Exhibits activity toward saturated C18 to C26 acyl-CoA substrates, with the highest activity towards C22:0 acyl-CoA. Important for saturated C24:0 and monounsaturated C24:1 sphingolipid synthesis. Indirectly inhibits RPE65 via production of VLCFAs.

Asadi A., Submitted (JAN-2001) to the EMBL/GenBank/DDBJ databases.

Lai C.-H., Genome Res. 10:703-713(2000).

Ota T., Nat. Genet. 36:40-45(2004).

Note: This product is for in vitro research use only