

ELOVL4 Antibody

Catalog No: #34672

Package Size: #34672-1 50ul #34672-2 100ul

Orders: order@signalwayantibody.comSupport: tech@signalwayantibody.com

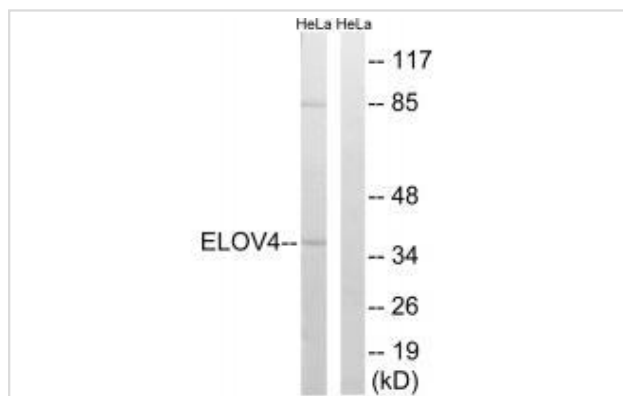
Description

Product Name	ELOVL4 Antibody
Host Species	Rabbit
Clonality	Polyclonal
Purification	The antibody was affinity-purified from rabbit antiserum by affinity-chromatography using epitope-specific immunogen.
Applications	WB
Species Reactivity	Hu Ms
Specificity	The antibody detects endogenous levels of total ELOVL4 protein.
Immunogen Type	Peptide
Immunogen Description	Synthesized peptide derived from internal of human ELOVL4.
Target Name	ELOVL4
Other Names	Elongation of very long chain fatty acids protein 4;
Accession No.	Swiss-Prot: Q9GZR5NCBI Gene ID: 6785
Uniprot	Q9GZR5
GeneID	6785;
SDS-PAGE MW	37kd
Concentration	1.0mg/ml
Formulation	Rabbit IgG in phosphate buffered saline (without Mg ²⁺ and Ca ²⁺), pH 7.4, 150mM NaCl, 0.02% sodium azide and 50% glycerol.
Storage	Store at -20°C

Application Details

Western blotting: 1:500~1:3000

Images



Western blot analysis of extracts from HeLa cells, using ELOVL4 antibody #34672.

Background

Condensing enzyme that elongates saturated and monounsaturated very long chain fatty acids (VLCFAs). Elongates C24:0 and C26:0 acyl-CoAs. Seems to represent a photoreceptor-specific component of the fatty acid elongation system residing on the endoplasmic reticulum. May be implicated in docosahexaenoic acid (DHA) biosynthesis, which requires dietary consumption of the essential alpha-linolenic acid and a subsequent series of three elongation steps. May play a critical role in early brain and skin development.

Zhang K., Nat. Genet. 27:89-93(2001).

Edwards A.O., Invest. Ophthalmol. Vis. Sci. 42:2652-2663(2001).

Ota T., Nat. Genet. 36:40-45(2004).

Note: This product is for in vitro research use only