

## MAN1B1 Antibody

Catalog No: #34675

Package Size: #34675-1 50ul #34675-2 100ul

Orders: [order@signalwayantibody.com](mailto:order@signalwayantibody.com)Support: [tech@signalwayantibody.com](mailto:tech@signalwayantibody.com)

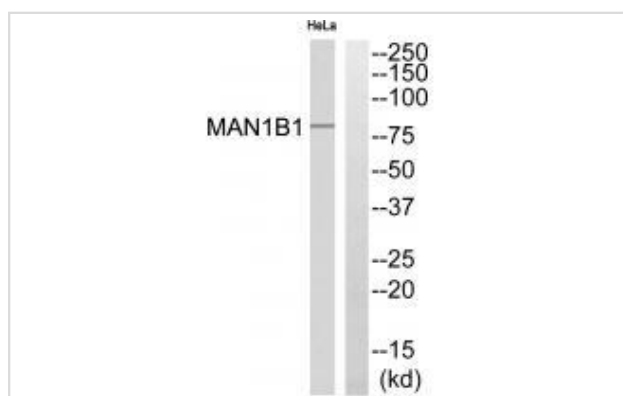
## Description

Product Name	MAN1B1 Antibody
Host Species	Rabbit
Clonality	Polyclonal
Purification	The antibody was affinity-purified from rabbit antiserum by affinity-chromatography using epitope-specific immunogen.
Applications	WB
Species Reactivity	Hu Ms
Specificity	The antibody detects endogenous levels of total MAN1B1 protein.
Immunogen Type	Peptide
Immunogen Description	Synthesized peptide derived from internal of human MAN1B1.
Target Name	MAN1B1
Other Names	Endoplasmic reticulum mannosyl-oligosaccharide 1; 2-alpha-mannosidase; EC=3.2.1.113; ER alpha-1; 2-mannosidase
Accession No.	Swiss-Prot: Q9UKM7NCBI Gene ID: 11253
Uniprot	Q9UKM7
GeneID	11253;
SDS-PAGE MW	80kd
Concentration	1.0mg/ml
Formulation	Rabbit IgG in phosphate buffered saline (without Mg <sup>2+</sup> and Ca <sup>2+</sup> ), pH 7.4, 150mM NaCl, 0.02% sodium azide and 50% glycerol.
Storage	Store at -20°C

## Application Details

Western blotting: 1:500~1:3000

## Images



Western blot analysis of extracts from 3T3 cells, using MAN1B1 antibody #34675.

## Background

Involved in glycoprotein quality control targeting of misfolded glycoproteins for degradation. It primarily trims a single alpha-1,2-linked mannose residue from Man9GlcNAc2 to produce Man8GlcNAc2, but at high enzyme concentrations, as found in the ER quality control compartment (ERQC), it further trims the carbohydrates to Man5-6GlcNAc2.

Tremblay L.O., Glycobiology 9:1073-1078(1999) [PubMed: 10521544].

Gonzalez D.S., J. Biol. Chem. 274:21375-21386(1999) [PubMed: 10409699].

Clark H.F., Genome Res. 13:2265-2270(2003) [PubMed: 12975309].

---

Note: This product is for in vitro research use only