

## EPN2 Antibody

Catalog No: #34677

Package Size: #34677-1 50ul #34677-2 100ul

Orders: order@signalwayantibody.com

Support: tech@signalwayantibody.com

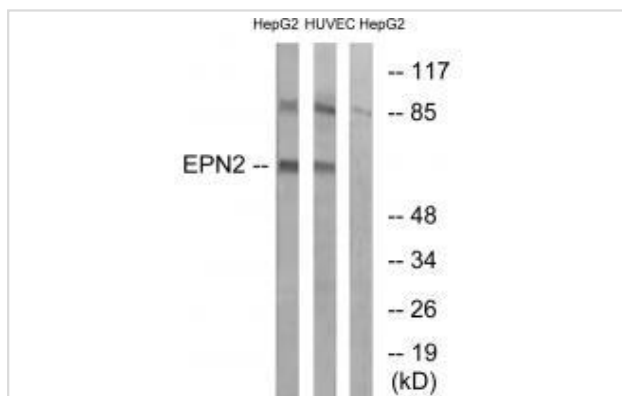
## Description

|                       |  |
|-----------------------|--|
| Product Name          | EPN2 Antibody  |
| Host Species          | Rabbit   |
| Clonality             | Polyclonal   |
| Purification          | The antibody was affinity-purified from rabbit antiserum by affinity-chromatography using epitope-specific immunogen.                              |
| Applications          | WB   |
| Species Reactivity    | Hu Ms Rt   |
| Specificity           | The antibody detects endogenous levels of total EPN2 protein.  |
| Immunogen Type        | Peptide  |
| Immunogen Description | Synthesized peptide derived from internal of human EPN2.   |
| Target Name           | EPN2   |
| Other Names           | EPN2; EPS-15 interacting protein 2; KIAA1065;  |
| Accession No.         | Swiss-Prot: O95208NCBI Gene ID: 22905  |
| Uniprot               | O95208   |
| GeneID                | 22905;   |
| SDS-PAGE MW           | 68kd   |
| Concentration         | 1.0mg/ml   |
| Formulation           | Rabbit IgG in phosphate buffered saline (without Mg <sup>2+</sup> and Ca <sup>2+</sup> ), pH 7.4, 150mM NaCl, 0.02% sodium azide and 50% glycerol. |
| Storage               | Store at -20°C   |

## Application Details

Western blotting: 1:500~1:3000

## Images



Western blot analysis of extracts from HepG2 cells and HUVEC cells, using EPN2 antibody #34677.

## Background

---

Plays a role in the formation of clathrin-coated invaginations and endocytosis.

Rosenthal J.A., J. Biol. Chem. 274:33959-33965(1999).

Kikuno R., DNA Res. 6:197-205(1999).

Ota T., Nat. Genet. 36:40-45(2004).

---

Note: This product is for in vitro research use only