

EPN3 Antibody

Catalog No: #34678

Package Size: #34678-1 50ul #34678-2 100ul

Orders: order@signalwayantibody.comSupport: tech@signalwayantibody.com

Description

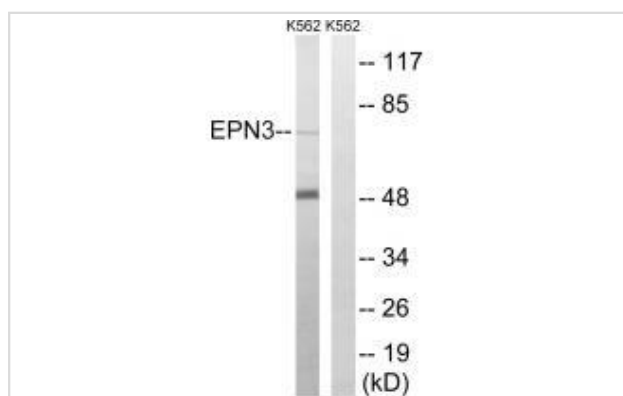
Product Name	EPN3 Antibody
Host Species	Rabbit
Clonality	Polyclonal
Purification	The antibody was affinity-purified from rabbit antiserum by affinity-chromatography using epitope-specific immunogen.
Applications	WB IHC
Species Reactivity	Hu
Specificity	The antibody detects endogenous levels of total EPN3 protein.
Immunogen Type	Peptide
Immunogen Description	Synthesized peptide derived from internal of human EPN3.
Target Name	EPN3
Other Names	Epsin-3; EPS-15-interacting protein 3;
Accession No.	Swiss-Prot: Q9H201NCBI Gene ID: 55040
Uniprot	Q9H201
GeneID	55040;
SDS-PAGE MW	68kd
Concentration	1.0mg/ml
Formulation	Rabbit IgG in phosphate buffered saline (without Mg ²⁺ and Ca ²⁺), pH 7.4, 150mM NaCl, 0.02% sodium azide and 50% glycerol.
Storage	Store at -20°C

Application Details

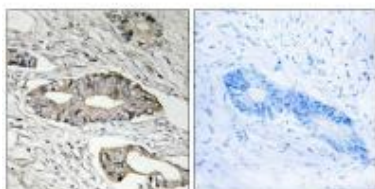
Western blotting: 1:500~1:3000

Immunohistochemistry: 1:50~1:100

Images



Western blot analysis of extracts from K562 cells, using EPN3 antibody #34678.



Immunohistochemistry analysis of paraffin-embedded human colon carcinoma tissue, using EPN3 antibody #34678.

Background

Belongs to the epsin family. 2 isoforms of the human protein are produced by alternative splicing.

Spradling K.D., J. Biol. Chem. 276:29257-29267(2001).

Ota T., Nat. Genet. 36:40-45(2004).

Mural R.J., Submitted (SEP-2005) to the EMBL/GenBank/DDBJ databases.

Note: This product is for in vitro research use only