

## ALDOC Antibody

Catalog No: #34689

Package Size: #34689-1 50ul #34689-2 100ul

Orders: [order@signalwayantibody.com](mailto:order@signalwayantibody.com)Support: [tech@signalwayantibody.com](mailto:tech@signalwayantibody.com)

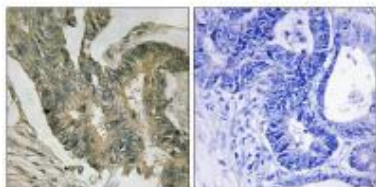
## Description

Product Name	ALDOC Antibody
Host Species	Rabbit
Clonality	Polyclonal
Purification	The antibody was affinity-purified from rabbit antiserum by affinity-chromatography using epitope-specific immunogen.
Applications	IHC
Species Reactivity	Hu Ms
Specificity	The antibody detects endogenous levels of total ALDOC protein.
Immunogen Type	Peptide
Immunogen Description	Synthesized peptide derived from internal of human ALDOC.
Target Name	ALDOC
Other Names	Fructose-bisphosphate aldolase C; EC 4.1.2.13; Brain-type aldolase;
Accession No.	Swiss-Prot: P09972NCBI Gene ID: 230
Uniprot	P09972
GeneID	230;
SDS-PAGE MW	40kd
Concentration	1.0mg/ml
Formulation	Rabbit IgG in phosphate buffered saline (without Mg <sup>2+</sup> and Ca <sup>2+</sup> ), pH 7.4, 150mM NaCl, 0.02% sodium azide and 50% glycerol.
Storage	Store at -20°C

## Application Details

Immunohistochemistry: 1:50~1:100

## Images



Immunohistochemistry analysis of paraffin-embedded human colon carcinoma tissue using ALDOC antibody #34689.

## Background

---

This gene encodes a member of the class I fructose-biphosphate aldolase gene family. Expressed specifically in the hippocampus and Purkinje cells of the brain, the encoded protein is a glycolytic enzyme that catalyzes the reversible aldol cleavage of fructose-1,6-biphosphate and fructose 1-phosphate to dihydroxyacetone phosphate and either glyceraldehyde-3-phosphate or glyceraldehyde, respectively.

Rottmann W.H., Biochimie 69:137-145(1987).

Buono P., Nucleic Acids Res. 16:4733-4733(1988).

Buono P., Eur. J. Biochem. 192:805-811(1990).

---

Note: This product is for in vitro research use only