

## GCF Antibody

Catalog No: #34702

Package Size: #34702-1 50ul #34702-2 100ul

Orders: [order@signalwayantibody.com](mailto:order@signalwayantibody.com)Support: [tech@signalwayantibody.com](mailto:tech@signalwayantibody.com)

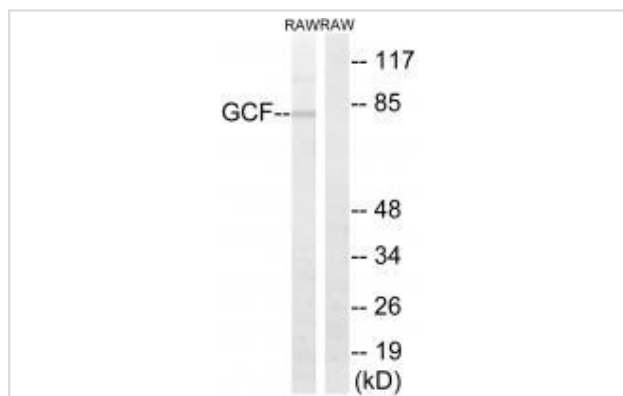
## Description

Product Name	GCF Antibody
Host Species	Rabbit
Clonality	Polyclonal
Purification	The antibody was affinity-purified from rabbit antiserum by affinity-chromatography using epitope-specific immunogen.
Applications	WB
Species Reactivity	Hu Ms
Specificity	The antibody detects endogenous levels of total GCF protein.
Immunogen Type	Peptide
Immunogen Description	Synthesized peptide derived from internal of human GCF.
Target Name	GCF
Other Names	C2orf3; GC-rich sequence DNA-binding factor; GCF; TCF-9; Transcription factor 9
Accession No.	Swiss-Prot: P16383NCBI Gene ID: 6936
Uniprot	P16383
GeneID	6936;
SDS-PAGE MW	80kd
Concentration	1.0mg/ml
Formulation	Rabbit IgG in phosphate buffered saline (without Mg <sup>2+</sup> and Ca <sup>2+</sup> ), pH 7.4, 150mM NaCl, 0.02% sodium azide and 50% glycerol.
Storage	Store at -20°C

## Application Details

Western blotting: 1:500~1:3000

## Images



Western blot analysis of extracts from RAW264.7 cells, using GCF antibody #34702.

## Background

---

Factor that represses transcription. It binds to the GC-rich sequences (5'-GCGGGGC-3') present in the epidermal growth factor receptor, beta-actin, and calcium-dependent protease promoters. Involved in pre-mRNA splicing through regulating spliceosome C complex formation. May play a role during late-stage splicing events and turnover of excised introns.

Kageyama R., Cell 59:815-825(1989).

Hillier L.W., Nature 434:724-731(2005).

The MGC Project Team; Genome Res. 14:2121-2127(2004).

---

Note: This product is for in vitro research use only