

## GDF15 Antibody

Catalog No: #34712

Package Size: #34712-1 50ul #34712-2 100ul

Orders: order@signalwayantibody.com

Support: tech@signalwayantibody.com

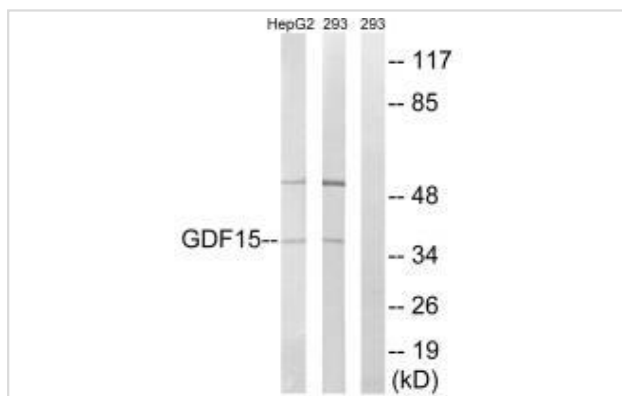
## Description

Product Name	GDF15 Antibody
Host Species	Rabbit
Clonality	Polyclonal
Purification	The antibody was affinity-purified from rabbit antiserum by affinity-chromatography using epitope-specific immunogen.
Applications	WB
Species Reactivity	Hu
Specificity	The antibody detects endogenous levels of total GDF15 protein.
Immunogen Type	Peptide
Immunogen Description	Synthesized peptide derived from internal of human GDF15.
Target Name	GDF15
Other Names	GDF-15; growth differentiation factor 15; MIC-1; MIC1; NAG-1
Accession No.	Swiss-Prot: Q99988NCBI Gene ID: 9518
Uniprot	Q99988
GeneID	9518;
SDS-PAGE MW	37kd
Concentration	1.0mg/ml
Formulation	Rabbit IgG in phosphate buffered saline (without Mg <sup>2+</sup> and Ca <sup>2+</sup> ), pH 7.4, 150mM NaCl, 0.02% sodium azide and 50% glycerol.
Storage	Store at -20°C

## Application Details

Western blotting: 1:500~1:3000

## Images



Western blot analysis of extracts from HepG2 cells and 293 cells, using GDF15 antibody #34712.

## Background

---

Bone morphogenetic proteins (e.g., BMP9; MIM 605120) are members of the transforming growth factor-beta (see TGFB1; MIM 190180) superfamily and regulate tissue differentiation and maintenance. They are synthesized as precursor molecules that are processed at a dibasic cleavage site to release C-terminal domains containing a characteristic motif of 7 conserved cysteines in the mature protein.[supplied by OMIM, Oct 2009]

Hromas R., *Biochim. Biophys. Acta* 1354:40-44(1997).

Yokoyama-Kobayashi M., *J. Biochem.* 122:622-626(1997).

Bootcov M.R., *Proc. Natl. Acad. Sci. U.S.A.* 94:11514-11519(1997).

---

Note: This product is for in vitro research use only