

## GDF7 Antibody

Catalog No: #34713

Package Size: #34713-1 50ul #34713-2 100ul

Orders: [order@signalwayantibody.com](mailto:order@signalwayantibody.com)Support: [tech@signalwayantibody.com](mailto:tech@signalwayantibody.com)

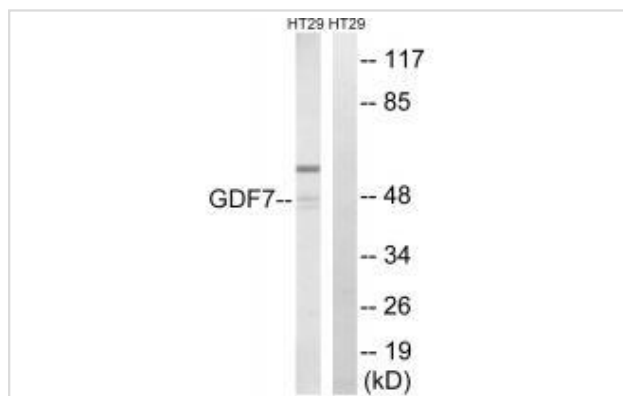
## Description

Product Name	GDF7 Antibody
Host Species	Rabbit
Clonality	Polyclonal
Purification	The antibody was affinity-purified from rabbit antiserum by affinity-chromatography using epitope-specific immunogen.
Applications	WB
Species Reactivity	Hu
Specificity	The antibody detects endogenous levels of total GDF7 protein.
Immunogen Type	Peptide
Immunogen Description	Synthesized peptide derived from internal of human GDF7.
Target Name	GDF7
Other Names	Growth/differentiation factor 7; GDF-7;
Accession No.	Swiss-Prot: Q7Z4P5NCBI Gene ID: 151449
Uniprot	Q7Z4P5
GeneID	151449;
SDS-PAGE MW	47kd
Concentration	1.0mg/ml
Formulation	Rabbit IgG in phosphate buffered saline (without Mg <sup>2+</sup> and Ca <sup>2+</sup> ), pH 7.4, 150mM NaCl, 0.02% sodium azide and 50% glycerol.
Storage	Store at -20°C

## Application Details

Western blotting: 1:500~1:3000

## Images



Western blot analysis of extracts from HT-29 cells, using GDF7 antibody #34713.

## Background

---

May play an active role in the motor area of the primate neocortex By similarity.

Guo J.H., Submitted (JUN-2002) to the EMBL/GenBank/DDBJ databases.

---

Note: This product is for in vitro research use only