

SAR1B Antibody

Catalog No: #34724

Package Size: #34724-1 50ul #34724-2 100ul

Orders: order@signalwayantibody.com

Support: tech@signalwayantibody.com

Description

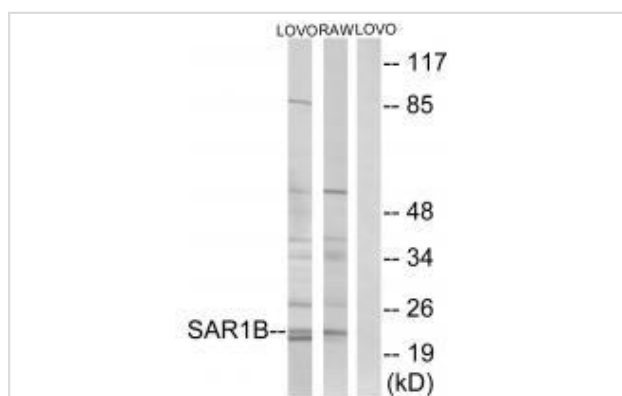
Product Name	SAR1B Antibody
Host Species	Rabbit
Clonality	Polyclonal
Purification	The antibody was affinity-purified from rabbit antiserum by affinity-chromatography using epitope-specific immunogen.
Applications	WB IHC
Species Reactivity	Hu Ms Rt
Specificity	The antibody detects endogenous levels of total SAR1B protein.
Immunogen Type	Peptide
Immunogen Description	Synthesized peptide derived from internal of human SAR1B.
Target Name	SAR1B
Other Names	GTP-binding protein SAR1b; GTBPB; SAR1B; SARA2; SARB
Accession No.	Swiss-Prot: Q9Y6B6NCBI Gene ID: 51128
Uniprot	Q9Y6B6
GeneID	51128;
SDS-PAGE MW	22kd
Concentration	1.0mg/ml
Formulation	Rabbit IgG in phosphate buffered saline (without Mg ²⁺ and Ca ²⁺), pH 7.4, 150mM NaCl, 0.02% sodium azide and 50% glycerol.
Storage	Store at -20°C

Application Details

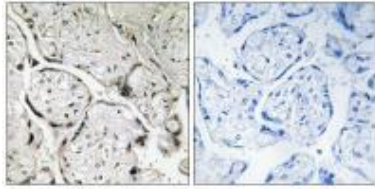
Western blotting: 1:500~1:3000

Immunohistochemistry: 1:50~1:100

Images



Western blot analysis of extracts from LOVO cells and RAW264.7 cells, using SAR1B antibody #34724.



Immunohistochemistry analysis of paraffin-embedded human placenta tissue using SAR1B antibody #34724.

Background

Involved in transport from the endoplasmic reticulum to the Golgi apparatus. Activated by the guanine nucleotide exchange factor PREB. Involved in the selection of the protein cargo and the assembly of the COPII coat complex.

Song H., Submitted (SEP-1998) to the EMBL/GenBank/DDBJ databases.

Zhou Y., Submitted (JUL-2003) to the EMBL/GenBank/DDBJ databases.

The MGC Project Team; Genome Res. 14:2121-2127(2004).

Note: This product is for in vitro research use only