

CUEDC2 Antibody

Catalog No: #21673

Package Size: #21673-1 50ul #21673-2 100ul

Orders: order@signalwayantibody.comSupport: tech@signalwayantibody.com

Description

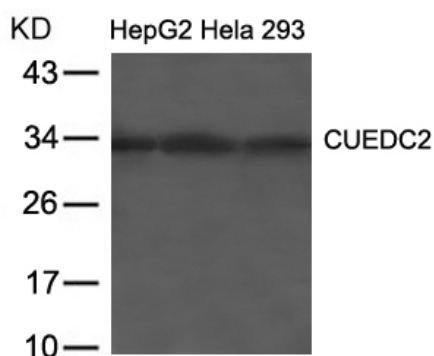
Product Name	CUEDC2 Antibody
Host Species	Rabbit
Clonality	Polyclonal
Purification	Antibodies were produced by immunizing rabbits with synthetic peptide and KLH conjugates. Antibodies were purified by affinity-chromatography using epitope-specific peptide.
Applications	WB
Species Reactivity	Hu Ms
Specificity	The antibody detects endogenous level of total CUEDC2 protein.
Immunogen Type	Peptide-KLH
Immunogen Description	Peptide sequence around aa.262~266(D-V-R-N-P) derived from Human CUEDC2.
Target Name	CUEDC2
Other Names	C10orf66; bA18I14.5;
Accession No.	Swiss-Prot: Q9H467NCBI Protein: NP_076945.2
Uniprot	Q9H467
GeneID	79004;
Concentration	1.0mg/ml
Formulation	Supplied at 1.0mg/mL in phosphate buffered saline (without Mg ²⁺ and Ca ²⁺), pH 7.4, 150mM NaCl, 0.02% sodium azide and 50% glycerol.
Storage	Store at -20°C for long term preservation (recommended). Store at 4°C for short term use.

Application Details

Predicted MW: 32kd

Western blotting: 1:500~1:1000

Images



Western blot analysis of extracts from HepG2, Hela and 293 cells using CUEDC2 Antibody #21673.

Background

Down-regulates ESR1 protein levels through the ubiquitination-proteasome pathway, regardless of the presence of 17 beta-estradiol. Also involved in 17 beta-estradiol-induced ESR1 degradation. Controls PGR protein levels through a similar mechanism.

Zhang P.-J., Zhao J., Li H.-Y. EMBO J. 26:1831-1842(2007)

Note: This product is for in vitro research use only