

GNAT1 Antibody

Catalog No: #34728

Package Size: #34728-1 50ul #34728-2 100ul

Orders: order@signalwayantibody.comSupport: tech@signalwayantibody.com

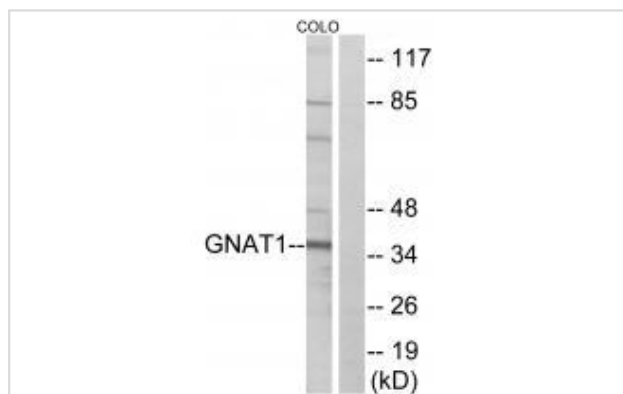
Description

| | |
|-----------------------|--|
| Product Name | GNAT1 Antibody |
| Host Species | Rabbit |
| Clonality | Polyclonal |
| Purification | The antibody was affinity-purified from rabbit antiserum by affinity-chromatography using epitope-specific immunogen. |
| Applications | WB |
| Species Reactivity | Hu Ms |
| Specificity | The antibody detects endogenous levels of total GNAT1 protein. |
| Immunogen Type | Peptide |
| Immunogen Description | Synthesized peptide derived from internal of human GNAT1. |
| Target Name | GNAT1 |
| Other Names | GBT1; GNATR; guanine nucleotide-binding protein G; transducin alpha-1 ch; |
| Accession No. | Swiss-Prot: P11488NCBI Gene ID: 2779 |
| Uniprot | P11488 |
| GeneID | 2779; |
| SDS-PAGE MW | 36kd |
| Concentration | 1.0mg/ml |
| Formulation | Rabbit IgG in phosphate buffered saline (without Mg ²⁺ and Ca ²⁺), pH 7.4, 150mM NaCl, 0.02% sodium azide and 50% glycerol. |
| Storage | Store at -20°C |

Application Details

Western blotting: 1:500~1:3000

Images



Western blot analysis of extracts from COLO cells, using GNAT1 antibody #34728.

Background

Guanine nucleotide-binding proteins (G proteins) are involved as modulators or transducers in various transmembrane signaling systems. Transducin is an amplifier and one of the transducers of a visual impulse that performs the coupling between rhodopsin and cGMP-phosphodiesterase.

Fong S.-L.; Nucleic Acids Res. 20:2865-2870(1992).

Lerea C.L., Neuron 3:367-376(1989).

van Dop C., Nucleic Acids Res. 17:4887-4887(1989).

Note: This product is for in vitro research use only