

GNL3L Antibody

Catalog No: #34732

Package Size: #34732-1 50ul #34732-2 100ul

Orders: order@signalwayantibody.com

Support: tech@signalwayantibody.com

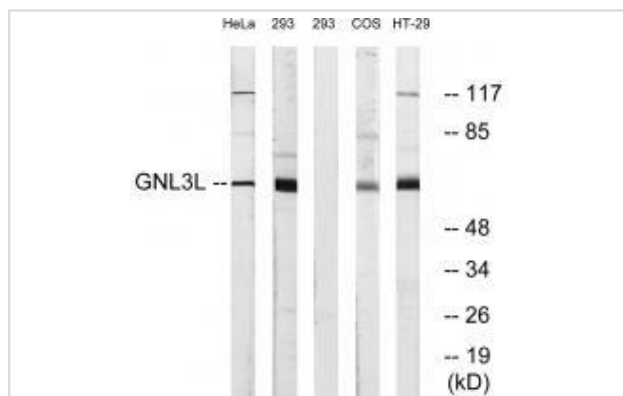
Description

Product Name	GNL3L Antibody
Host Species	Rabbit
Clonality	Polyclonal
Purification	The antibody was affinity-purified from rabbit antiserum by affinity-chromatography using epitope-specific immunogen.
Applications	WB
Species Reactivity	Hu
Specificity	The antibody detects endogenous levels of total GNL3L protein.
Immunogen Type	Peptide
Immunogen Description	Synthesized peptide derived from internal of human GNL3L.
Target Name	GNL3L
Other Names	guanine nucleotide binding protein-like 3 (nucleolar)-like; guanine nucleotide-binding protein-like 3-like protein;
Accession No.	Swiss-Prot: Q9NVN8NCBI Gene ID: 54552
Uniprot	Q9NVN8
GeneID	54552;
SDS-PAGE MW	66kd
Concentration	1.0mg/ml
Formulation	Rabbit IgG in phosphate buffered saline (without Mg ²⁺ and Ca ²⁺), pH 7.4, 150mM NaCl, 0.02% sodium azide and 50% glycerol.
Storage	Store at -20°C

Application Details

Western blotting: 1:500~1:3000

Images



Western blot analysis of extracts from HeLa cells, 293 cells and HT-29 cells, using GNL3L antibody #34732.

Background

Stabilizes TERF1 telomeric association by preventing TERF1 recruitment by PML. Stabilizes TERF1 protein by preventing its ubiquitination and hence proteasomal degradation. Does so by interfering with TERF1-binding to FBXO4 E3 ubiquitin-protein ligase. Required for cell proliferation. By stabilizing TRF1 protein during mitosis, promotes metaphase-to-anaphase transition. Stabilizes MDM2 protein by preventing its ubiquitination, and hence proteasomal degradation. By acting on MDM2, may affect TP53 activity. Required for normal processing of ribosomal pre-rRNA. Binds GTP.

Ota T., Nat. Genet. 36:40-45(2004).

Ross M.T., Nature 434:325-337(2005).

The MGC Project Team; Genome Res. 14-2121-2127(2004).

Note: This product is for in vitro research use only