

## NKX26 Antibody

Catalog No: #34746

Package Size: #34746-1 50ul #34746-2 100ul

Orders: [order@signalwayantibody.com](mailto:order@signalwayantibody.com)Support: [tech@signalwayantibody.com](mailto:tech@signalwayantibody.com)

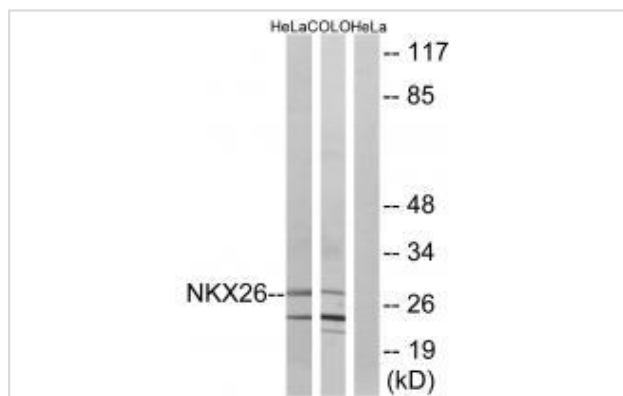
## Description

Product Name	NKX26 Antibody
Host Species	Rabbit
Clonality	Polyclonal
Purification	The antibody was affinity-purified from rabbit antiserum by affinity-chromatography using epitope-specific immunogen.
Applications	WB
Species Reactivity	Hu
Specificity	The antibody detects endogenous levels of total NKX26 protein.
Immunogen Type	Peptide
Immunogen Description	Synthesized peptide derived from internal of human NKX26.
Target Name	NKX26
Other Names	CSX2; homeobox Nkx-2.6; NK2 transcription factor related; 6; NKX26
Accession No.	Swiss-Prot: A6NCS4NCBI Gene ID: 18092
Uniprot	A6NCS4
GeneID	137814;
SDS-PAGE MW	28kd
Concentration	1.0mg/ml
Formulation	Rabbit IgG in phosphate buffered saline (without Mg <sup>2+</sup> and Ca <sup>2+</sup> ), pH 7.4, 150mM NaCl, 0.02% sodium azide and 50% glycerol.
Storage	Store at -20°C

## Application Details

Western blotting: 1:500~1:3000

## Images



Western blot analysis of extracts from HeLa cells and COLO cells, using NKX26 antibody #34746.

## Background

---

In conjunction with NKX2-5, may play a role in both pharyngeal and cardiac embryonic development By similarity.  
Nusbaum C., Nature 439:331-335(2006).

---

Note: This product is for in vitro research use only